



OVER 60?

Secure this property
for up to **59% less!**

Price

£375,000

Freehold

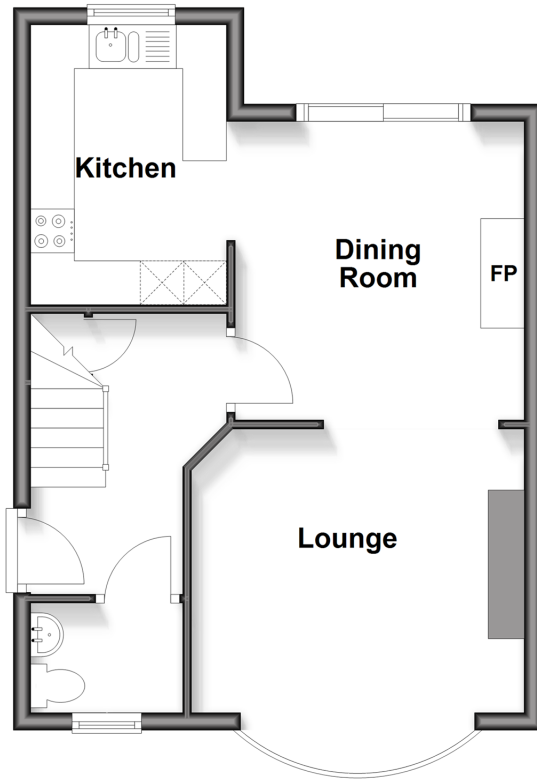
3x  1x  2x 

**Colyer Road, Northfleet,
Gravesend, Kent, DA11**

Wards
Helping you move forwards

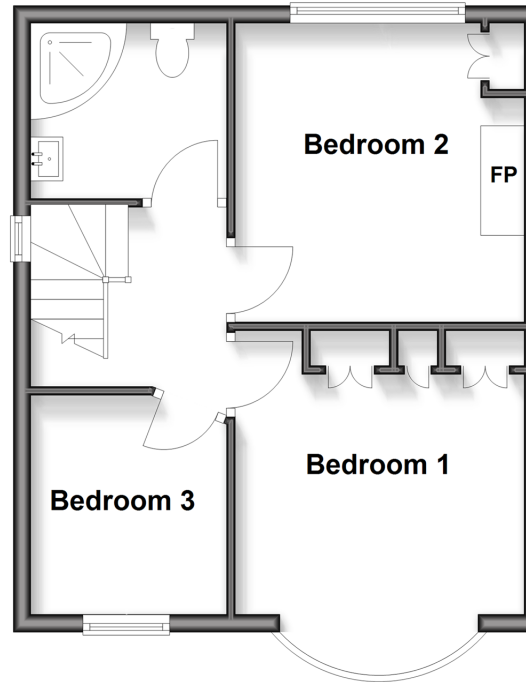
Ground Floor

Approx. 41.4 sq. metres (446.0 sq. feet)



First Floor

Approx. 38.4 sq. metres (413.7 sq. feet)



Outbuilding

Approx. 17.2 sq. metres (185.1 sq. feet)



Accommodation

GROUND FLOOR

Entrance Hall

Cloakroom

Lounge: 13'3 into bay x 11'4 (4.04m x 3.46m)

Dining Room : 11'3 x 10'11 (3.43m x 3.33m)

Kitchen : 11'1 x 7'4 (3.38m x 2.24m)

FIRST FLOOR

Landing

Bedroom 1: 13'6 into bay x 10'8 (4.12m x 3.25m)

Bedroom 2: 11'2 x 9'5 (3.41m x 2.87m)

Bedroom 3: 8'2 x 7'9 (2.49m x 2.36m)

Shower Room

OUTBUILDING

Office

OUTSIDE

Driveway

Rear Garden



Main features

- Driveway providing ample parking with car charging point
- Handy outbuilding to the rear currently used as an office
- Downstairs cloakroom
- Close to local shops, schools and other amenities
- Easy access to the A2/M2 motorway links



Nearest Schools

Primary Schools: Painters Ash Primary 0.6 miles, Dover Road Community Primary 0.9 miles

Secondary Schools: Northfleet School for Girls 0.2 miles, Northfleet Technology College 0.4 miles



Transport Information

Train Stations: Gravesend 1.6 miles, Ebbsfleet International 1.7 miles, Northfleet 1.9 miles



Address

Colyer Road, Northfleet, Gravesend, Kent, DA11



Directions

For directions to this property please contact us.



Wards
Helping you move forwards

Call Gravesend Branch 01474 352417 ■ wardsofkent.co.uk



■ Legal advice should be taken to verify fixtures/fittings, planning, alterations and/or lease details ■ Appliances & services are untested, dimensions are approximate and floor plans are not to scale
■ Through a Homewise Home For Life Plan people aged 60+ can secure this property for up to 50% less, by purchasing a Lifetime Lease



11140813/20251203/MM/YD