



**Price**

**£400,000**

**Freehold**

3x  1x  1x 

**Dombey Close, Higham,  
Rochester, Kent, ME3**

**OVER 60?**

Secure this property  
for up to **59% less!**

*Wards*  
Helping you move forwards





## Main features

- Ideal family home in the sought after village of Higham
- Expansive rear garden with an outdoor bar
- Convenient downstairs cloakroom
- Walking distance to Higham train station
- Close proximity to local amenities

## Accommodation

### GROUND FLOOR

Entrance Hall  
Cloakroom  
Lounge/Dining Area: 19'2 x 13'2 (5.85m x 4.02m)  
Kitchen: 11'2 x 8'4 (3.41m x 2.54m)

### FIRST FLOOR

Landing  
Bedroom 1: 10'11 up to fitted wardrobes x 9'11 (3.33m x 3.02m)  
Bedroom 2: 12'4 x 9'2 (3.76m x 2.80m)  
Bedroom 3: 9'10 x 6'8 (3.00m x 2.03m)  
Bathroom

### OUTBUILDING

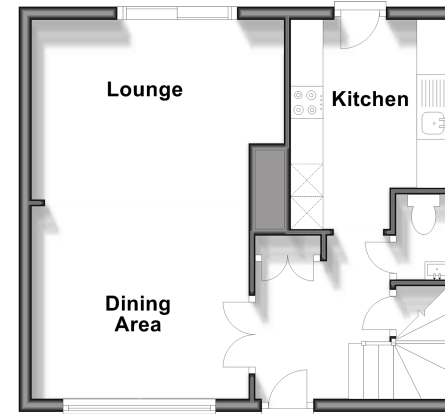
Outside Bar

### OUTSIDE

Front Garden  
Driveway  
Rear Garden

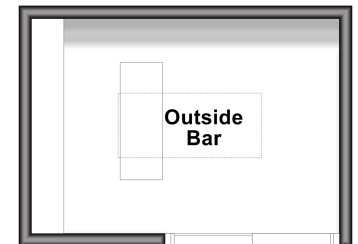
### Ground Floor

Approx. 38.0 sq. metres (408.6 sq. feet)



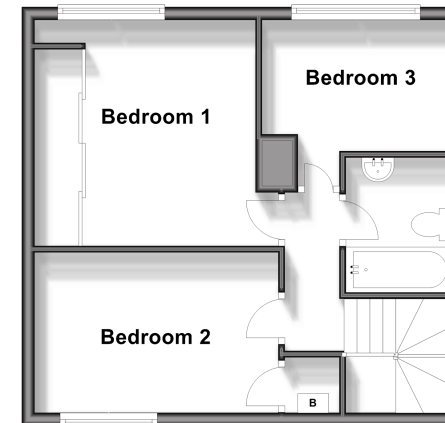
### Outbuilding

Approx. 15.9 sq. metres (170.7 sq. feet)



### First Floor

Approx. 39.5 sq. metres (424.7 sq. feet)



**Call Gravesend - 01474 352417 ■ [wardsof Kent.co.uk](http://wardsof Kent.co.uk)**

- Legal advice should be taken to verify fixtures/fittings, planning, alterations and/or lease details
- Appliances & services are untested, dimensions are approximate and floor plans are not to scale
- Through a Homewise Home For Life Plan people aged 60+ can secure this property for up to 59% less, by purchasing a Lifetime Lease.



11140240/20250306/MM/SB