



Guide Price
£300,000

Freehold

3x  1x  1x 

**Ferguson Avenue,
Gravesend, Kent, DA12**

OVER 60?

Secure this property
for up to **59% less!**

Wards
Helping you move forwards



Main features

- An excellent property with which to get on the ladder
- Handy downstairs cloakroom
- Easy access to local amenities
- Modern open plan living arrangements
- A good buy to let option

Accommodation

GROUND FLOOR

Entrance Hall
Cloakroom
Lounge/Kitchen/Diner: 25'1 x 15'8 (7.65m x 4.78m)

FIRST FLOOR

Landing
Bedroom 1: 12'3 x 8'8 (3.74m x 2.64m)
Bedroom 2: 12'4 x 8'3 (3.76m x 2.52m)
Bedroom 3: 8'6 x 7'2 (2.59m x 2.19m)
Bathroom : 6'6 x 6'5 (1.98m x 1.96m)

OUTSIDE

Front Garden
Rear Garden

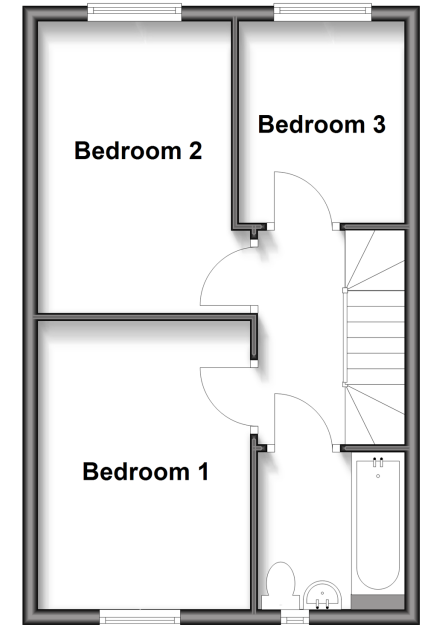
Ground Floor

Approx. 35.9 sq. metres (386.9 sq. feet)



First Floor

Approx. 36.6 sq. metres (394.2 sq. feet)



Call Gravesend - 01474 352417 ■ wardsofkent.co.uk

■ Legal advice should be taken to verify fixtures/fittings, planning, alterations and/or lease details
■ Through a Homewise Home For Life Plan people aged 60+ can secure this property for up to 59% less, by purchasing a Lifetime Lease.

■ Appliances & services are untested, dimensions are approximate and floor plans are not to scale



11133911/20250520/SB/KG