



OVER 60?

Secure this property
for up to **59% less!**

Price

£400,000

Freehold

3x  2x  1x 

**Southfields Green,
Gravesend, Kent, DA11**

Wards
Helping you move forwards



Main features

- Sought after development with allocated parking
- Handy cloakroom on the ground floor
- En-suite shower room to Bedroom 2
- 3 good sized bedrooms, perfect for a growing family
- Open plan kitchen/living area and separate lounge

Accommodation

GROUND FLOOR

Entrance Hall
Cloakroom
Kitchen/Diner : 22'7 x 14'1 (6.89m x 4.30m)

FIRST FLOOR

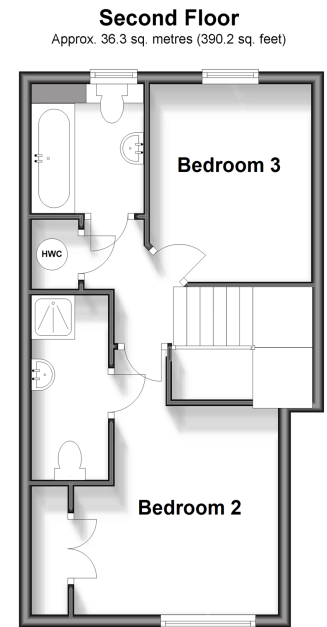
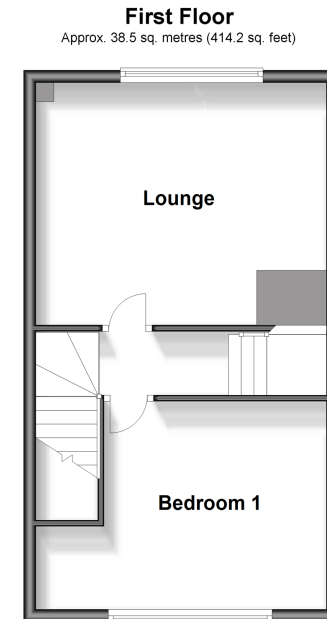
Hallway
Lounge : 15'5 x 12'8 (4.70m x 3.86m)
Bedroom 1: 13'0 x 10'11 (3.97m x 3.33m)

SECOND FLOOR

Landing
Bedroom 2: 13'7 x 10'11 (4.14m x 3.33m)
En-suite Shower Room
Bedroom 3: 10'1 x 8'8 (3.08m x 2.64m)
Bathroom

OUTSIDE

Rear Garden



Call Gravesend - 01474 352417 ■ wardsofkent.co.uk

■ Legal advice should be taken to verify fixtures/fittings, planning, alterations and/or lease details
■ Through a Homewise Home For Life Plan people aged 60+ can secure this property for up to 59% less, by purchasing a Lifetime Lease.

■ Appliances & services are untested, dimensions are approximate and floor plans are not to scale