



Price
£475,000

Freehold

3x  1x  2x 

**Valley Drive, Gravesend,
Kent, DA12**

OVER 60?

Secure this property
for up to **59% less!**

Wards
Helping you move forwards



Main features

- Billings build home in the desirable Valley Drive area
- Large garden, ideal for outdoor activities
- Potential to extend subject to planning permission
- Easy access to local amenities, schools and motorways
- No forward chain

Accommodation

GROUND FLOOR

Entrance Porch
Entrance Hall
Lounge : 13'6 x 12'8 (4.12m x 3.86m)
Dining Room: 13'10 x 12'11 (4.22m x 3.94m)
Kitchen : 10'4 x 7'11 (3.15m x 2.41m)
Utility Room/Cloakroom: 8'8 x 4'11 (2.64m x 1.50m)

FIRST FLOOR

Landing
Bedroom 1: 13'7 x 12'6 (4.14m x 3.81m)
Bedroom 2: 13'4 x 12'0 (4.07m x 3.66m)
Bedroom 3: 9'2 x 7'10 (2.80m x 2.39m)
Bathroom

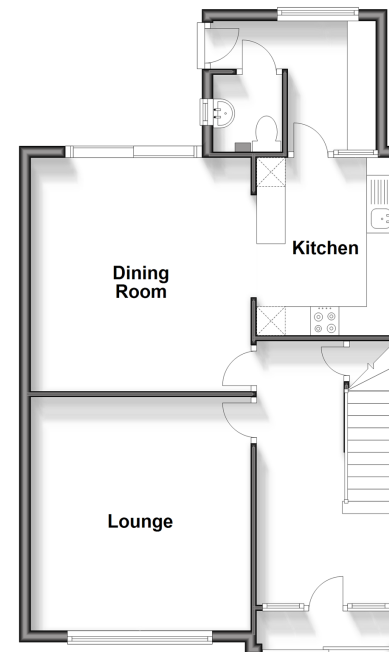
OUTBUILDING

Garage

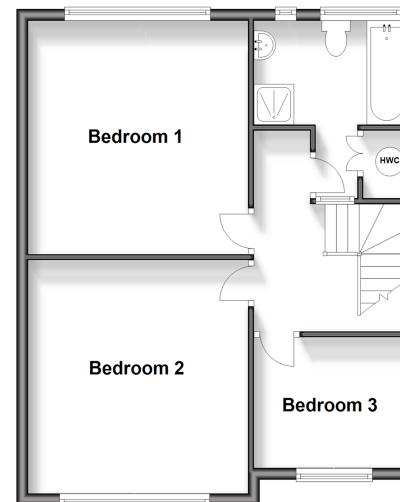
OUTSIDE

Front Garden
Off Road Parking
Rear Garden

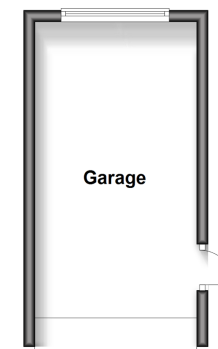
Ground Floor
Approx. 59.8 sq. metres (643.3 sq. feet)



First Floor
Approx. 51.6 sq. metres (555.5 sq. feet)



Outbuilding
Approx. 15.4 sq. metres (166.1 sq. feet)



Call Gravesend - 01474 352417 ■ wardsof Kent.co.uk

- Legal advice should be taken to verify fixtures/fittings, planning, alterations and/or lease details
- Appliances & services are untested, dimensions are approximate and floor plans are not to scale
- Through a Homewise Home For Life Plan people aged 60+ can secure this property for up to 59% less, by purchasing a Lifetime Lease.



11140381/20250127/MM/SB