



Price

£265,000

Leasehold

2x  1x  1x 

**Cornfield Drive,
Gravesend, Kent, DA11**

Wards
Helping you move forwards



Main features

- An immaculate property in a convenient location
- Open plan living accommodation
- Newly built in 2022
- Allocated parking for 1 vehicle
- 60% shared ownership available at £159,000 or full market value at £265,000

Accommodation

SECOND FLOOR

Entrance Hall

Lounge : 15'2 x 12'9 (4.63m x 3.89m)

Kitchen : 9'9 x 9'2 (2.97m x 2.80m)

Bedroom 1: 12'5 x 9'6 (3.79m x 2.90m)

Bedroom 2: 11'0 x 8'0 (3.36m x 2.44m)

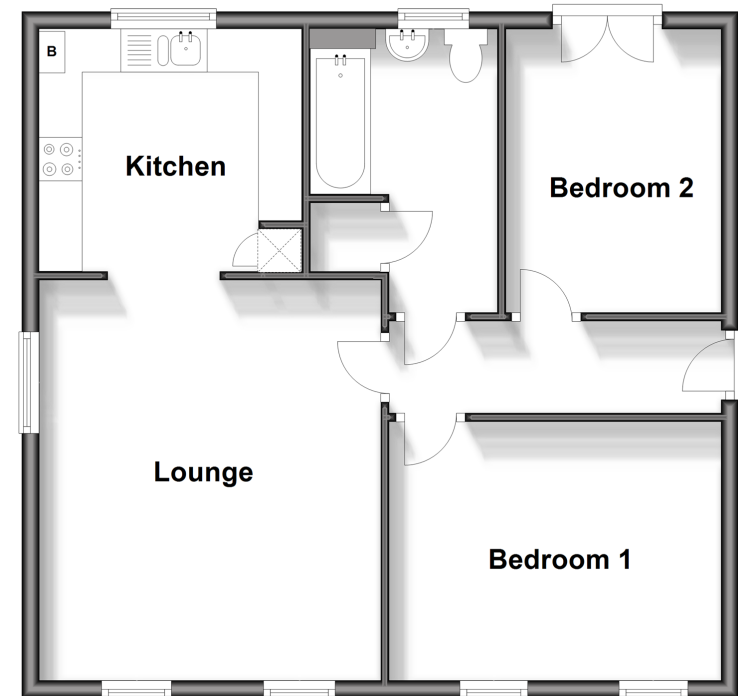
Bathroom : 11'0 x 7'1 (3.36m x 2.16m)

OUTSIDE

1 Allocated Parking Space

Second Floor

Approx. 59.5 sq. metres (640.5 sq. feet)



Call Gravesend - 01474 352417 ■ wardsofkent.co.uk

■ Legal advice should be taken to verify fixtures/fittings, planning, alterations and/or lease details

■ Appliances & services are untested, dimensions are approximate and floor plans are not to scale



11140353/20250106/MM/KG