



Price
£400,000

Freehold

3x  1x  1x 

**Cruden Road,
Gravesend, Kent, DA12**

OVER 60?

Secure this property
for up to **59% less!**

Wards
Helping you move forwards



Main features

- Immaculate family home in a convenient location
- Extended, offering much needed living space
- Very handy downstairs cloakroom
- Versatile and flexible layout
- Summer house with power and lighting

Accommodation

GROUND FLOOR

Entrance Porch
Entrance Hall
Guest Room/Study: 12'2 x 6'8 (3.71m x 2.03m)
Cloakroom
Kitchen/Breakfast Area: 10'2 x 6'8 (3.10m x 2.03m)
Lounge/Dining Area: 19'0 x 12'3 (5.80m x 3.74m)

FIRST FLOOR

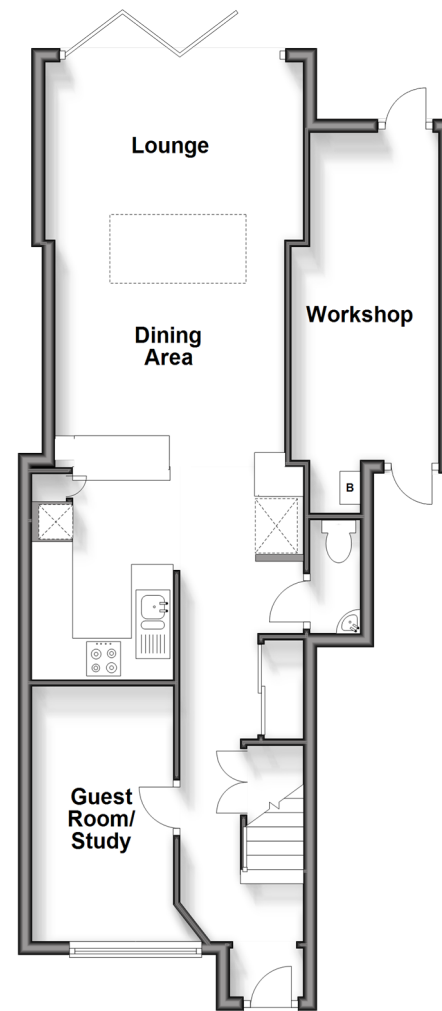
Landing
Bedroom 1: 12'9 x 12'4 (3.89m x 3.76m)
Bedroom 2: 9'3 x 7'8 (2.82m x 2.34m)
Bathroom

OUTSIDE

Driveway
Workshop
Rear Garden
Summer House: 15'0 x 11'1 (4.58m x 3.38m)

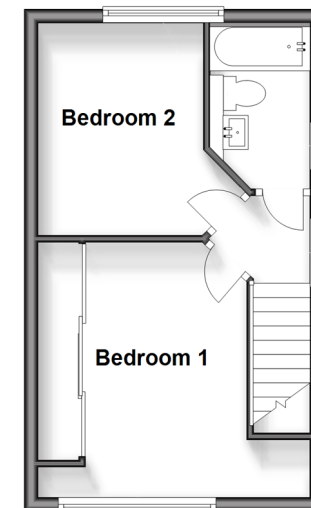
Ground Floor

Approx. 62.0 sq. metres (667.2 sq. feet)



First Floor

Approx. 27.6 sq. metres (297.3 sq. feet)



Call Gravesend - 01474 352417 ■ wardsof Kent.co.uk

- Legal advice should be taken to verify fixtures/fittings, planning, alterations and/or lease details
- Appliances & services are untested, dimensions are approximate and floor plans are not to scale
- Through a Homewise Home For Life Plan people aged 60+ can secure this property for up to 59% less, by purchasing a Lifetime Lease.



11139726/20241116/MM/KG