



**OVER 60?**

Secure this property  
for up to **59% less!**

**Price**

**£300,000**

**Freehold**

2x  1x  2x 

**Coombe Road,  
Gravesend, Kent, DA12**

*Wards*  
Helping you move forwards





## Main features

- Spacious terraced property ideal for first time buyers
- Downstairs cloakroom and large upstairs bathroom
- Open plan lounge/dining area
- Within walking distance of Gravesend town centre
- Good access to the A2 motorway

## Accommodation

### GROUND FLOOR

Entrance Hall

Lounge Area: 10'3 into bay x 10'2 (3.13m x 3.10m)

Dining Area: 11'8 x 10'5 (3.56m x 3.18m)

Kitchen : 9'7 x 8'1 (2.92m x 2.47m)

Cloakroom

### FIRST FLOOR

Landing

Bedroom 1: 12'9 x 10'5 (3.89m x 3.18m)

Bedroom 2: 10'4 x 8'9 (3.15m x 2.67m)

Bathroom

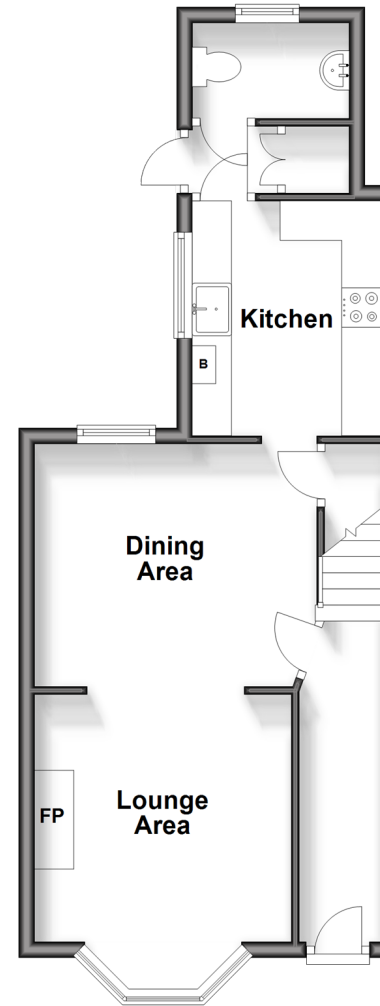
### OUTSIDE

Front Garden

Rear Garden

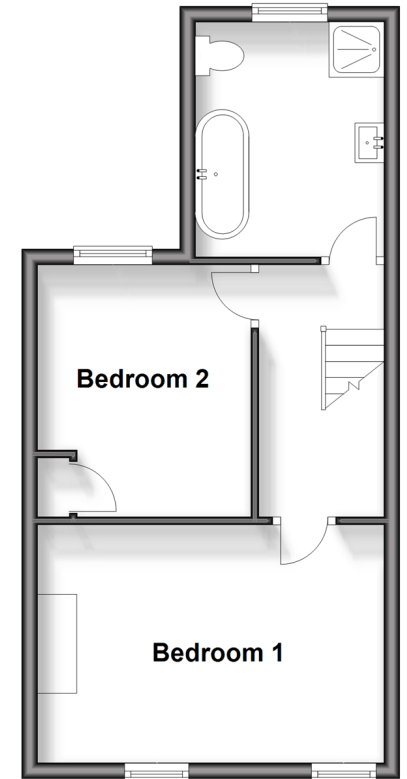
### Ground Floor

Approx. 39.9 sq. metres (429.6 sq. feet)



### First Floor

Approx. 35.5 sq. metres (382.0 sq. feet)



**Call Gravesend - 01474 352417 ■ [wardsof Kent.co.uk](http://wardsof Kent.co.uk)**

- Legal advice should be taken to verify fixtures/fittings, planning, alterations and/or lease details
- Appliances & services are untested, dimensions are approximate and floor plans are not to scale
- Through a Homewise Home For Life Plan people aged 60+ can secure this property for up to 59% less, by purchasing a Lifetime Lease.



11140222/20241026/MM/\*\*\*\*