



Price
£270,000

Freehold

2x  1x  2x 

**Seymour Road,
Northfleet, Gravesend,
Kent, DA11**

OVER 60?

Secure this property
for up to **59% less!**

Wards
Helping you move forwards



Main features

- Well presented Victorian home
- A great first time buy or buy-to-let investment
- Very handy downstairs toilet
- Upstairs family bathroom
- Conveniently located for all local amenities
- Bathroom accessed via Bedroom 1

Accommodation

GROUND FLOOR

Lounge : 13'0 x 12'1 into bay (3.97m x 3.69m)

Dining Room : 13'0 x 12'9 (3.97m x 3.89m)

Kitchen : 10'6 x 7'3 (3.20m x 2.21m)

Toilet

FIRST FLOOR

Bedroom 1: 13'0 x 10'0 (3.97m x 3.05m)

Bedroom 2: 13'0 x 10'0 (3.97m x 3.05m)

Bathroom

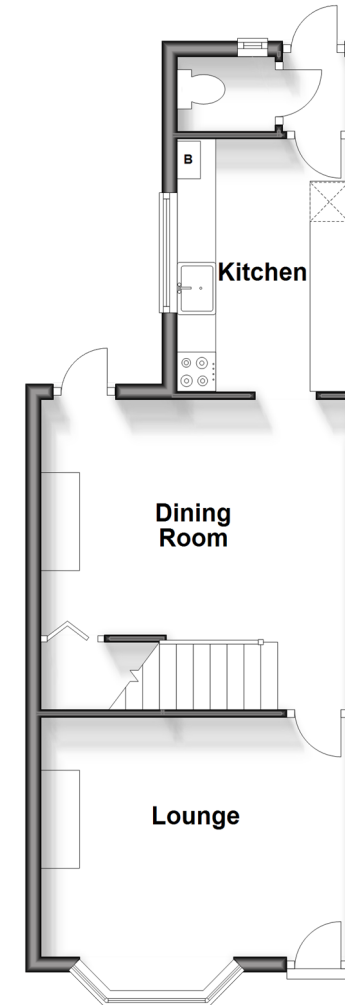
OUTSIDE

Front Garden

Rear Garden

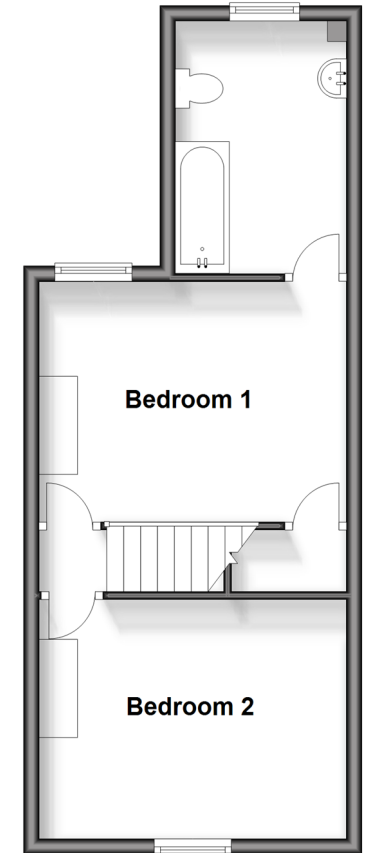
Ground Floor

Approx. 38.1 sq. metres (410.5 sq. feet)



First Floor

Approx. 36.0 sq. metres (387.8 sq. feet)



Call Gravesend - 01474 352417 ■ wardsof Kent.co.uk

- Legal advice should be taken to verify fixtures/ fittings, planning, alterations and/or lease details
- Appliances & services are untested, dimensions are approximate and floor plans are not to scale
- Through a Homewise Home For Life Plan people aged 60+ can secure this property for up to 59% less, by purchasing a Lifetime Lease.



11140291/20241017/MM/KG