



OVER 60?

Secure this property
for up to **59% less!**

Price
£160,000

Leasehold

2x  1x  1x 

**St. Mark's Avenue,
Northfleet, Gravesend,
Kent, DA11**

Wards
Helping you move forwards



Main features

- Ideal property for first time buyers and investors
- Separate kitchen
- No onward chain
- Small garden to the rear
- Close to local amenities, local schools and the A2 motorway for commuters
- Within walking distance of Gravesend Community Hospital and several main supermarkets

Accommodation

FIRST FLOOR

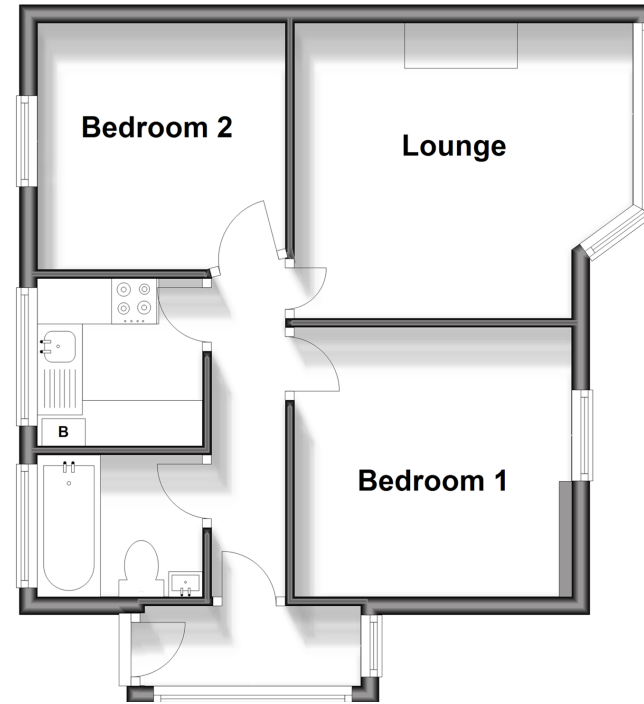
- Porch
- Hallway
- Lounge : 11'4 x 10'1 (3.46m x 3.08m)
- Kitchen : 6'3 x 6'1 (1.91m x 1.86m)
- Bedroom 1: 10'2 x 9'5 (3.10m x 2.87m)
- Bedroom 2: 9'1 x 9'1 (2.77m x 2.77m)
- Bathroom

OUTSIDE

- Rear Garden

First Floor

Approx. 41.3 sq. metres (444.6 sq. feet)



Call Gravesend - 01474 352417 ■ wardsofkent.co.uk

■ Legal advice should be taken to verify fixtures/fittings, planning, alterations and/or lease details
 ■ Through a Homewise Home For Life Plan people aged 60+ can secure this property for up to 59% less, by purchasing a Lifetime Lease.

■ Appliances & services are untested, dimensions are approximate and floor plans are not to scale



11140183/20240919/MM/AH