



OVER 60?

Secure this property
for up to **59% less!**

Price

£325,000

Freehold

2x  1x  2x 

**Colyer Road, Northfleet,
Gravesend, Kent, DA11**

Wards
Helping you move forwards



Main features

- Spacious and well presented house
- Great for first time buyers
- Easy access to local amenities
- Garage en-bloc
- Conservatory, adding useful living space
- Offered for sale with no forward chain

Accommodation

GROUND FLOOR

Entrance Hall

Kitchen : 8'4 x 7'4 (2.54m x 2.24m)

Lounge : 11'4 x 10'9 (3.46m x 3.28m)

Dining Area: 9'5 x 8'4 (2.87m x 2.54m)

Conservatory : 10'1 x 9'6 (3.08m x 2.90m)

FIRST FLOOR

Landing

Bedroom 1: 14'1 x 8'7 (4.30m x 2.62m)

Bedroom 2: 11'1 x 10'6 (3.38m x 3.20m)

Bathroom : 7'8 x 5'5 (2.34m x 1.65m)

OUTBUILDING

Garage En-Bloc

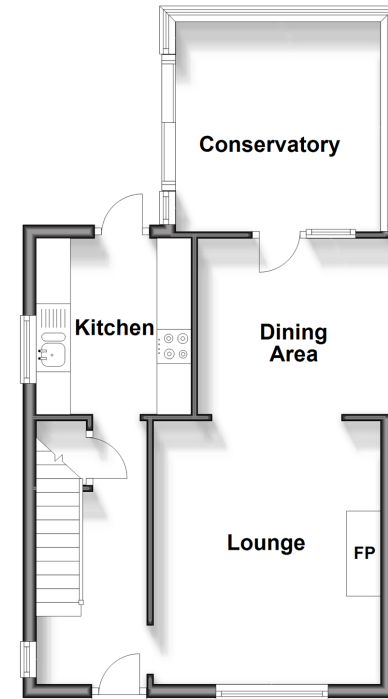
Outbuilding

OUTSIDE

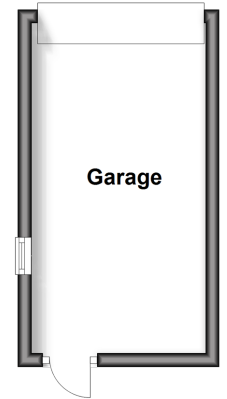
Front Garden

Rear Garden

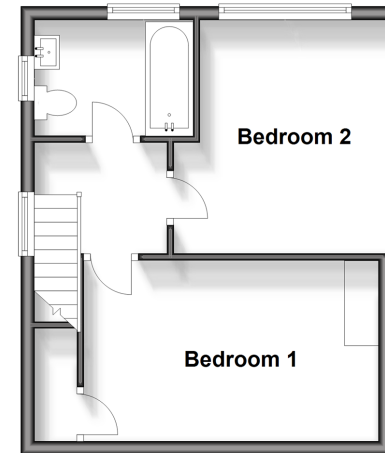
Ground Floor
Approx. 43.2 sq. metres (465.2 sq. feet)



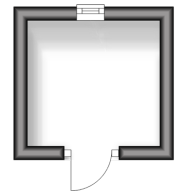
Outbuilding
Approx. 12.4 sq. metres (133.5 sq. feet)



First Floor
Approx. 32.1 sq. metres (345.2 sq. feet)



Outbuilding
Approx. 3.6 sq. metres (38.8 sq. feet)



Call Gravesend - 01474 352417 ■ wardsof Kent.co.uk

- Legal advice should be taken to verify fixtures/fittings, planning, alterations and/or lease details
- Appliances & services are untested, dimensions are approximate and floor plans are not to scale
- Through a Homewise Home For Life Plan people aged 60+ can secure this property for up to 59% less, by purchasing a Lifetime Lease.



11140270/20240930/MM/KG