



Guide Price
£375,000

Freehold

3x  1x  2x 

**Constitution Hill,
Gravesend, Kent, DA12**

OVER 60?

Secure this property
for up to **59% less!**

Wards
Helping you move forwards



Main features

- **Spacious townhouse set out over 3 floors**
- **Fantastic views**
- **2 lounges on separate floors with 1 offering a balcony**
- **Short walking distance of Gravesend train station offering commuters the high speed service into London**
- **Popular location, close to all local amenities**

Accommodation

GROUND FLOOR

Entrance Hall
Cloakroom
Family Room: 14'4 x 12'11 (4.37m x 3.94m)

FIRST FLOOR

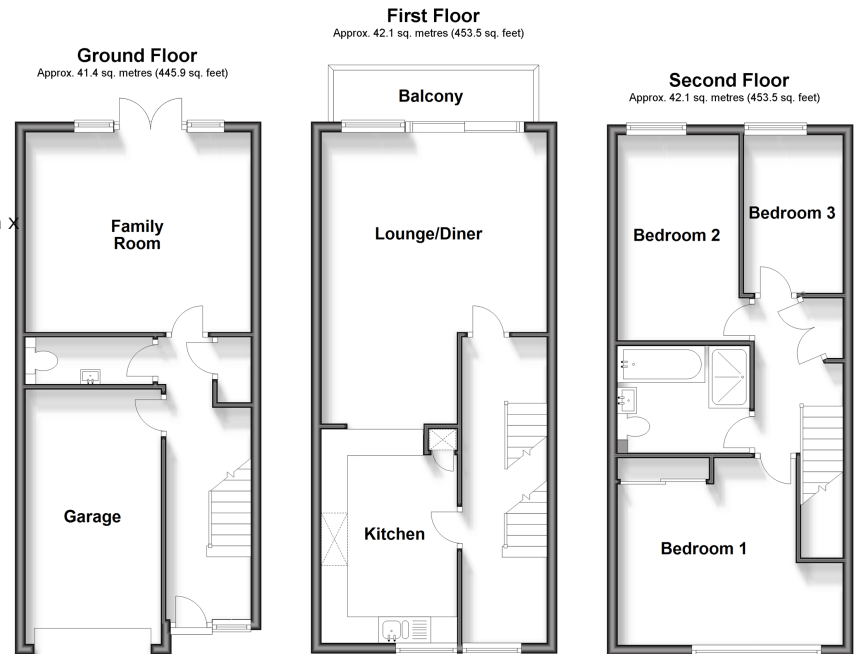
Landing
Lounge/Diner : (L-shaped) 14'3 x 13'2 (4.35m x 4.02m) plus 8'5 x 5'9 (2.57m x 1.75m)
Balcony
Kitchen : 13'10 x 8'9 (4.22m x 2.67m)

SECOND FLOOR

Landing
Bedroom 1: 12'5 x 11'0 (3.79m x 3.36m)
Bedroom 2: 12'11 x 7'10 (3.94m x 2.39m)
Bedroom 3: 10'4 x 6'2 (3.15m x 1.88m)
Bathroom

OUTSIDE

Integral Garage
Driveway
Rear Garden



Call Gravesend - 01474 352417 ■ wardsof Kent.co.uk

■ Legal advice should be taken to verify fixtures/fittings, planning, alterations and/or lease details
■ Through a Homewise Home For Life Plan people aged 60+ can secure this property for up to 59% less, by purchasing a Lifetime Lease.

■ Appliances & services are untested, dimensions are approximate and floor plans are not to scale



11140252/20241015/KG/AH