



OVER 60?

Secure this property
for up to **59% less!**

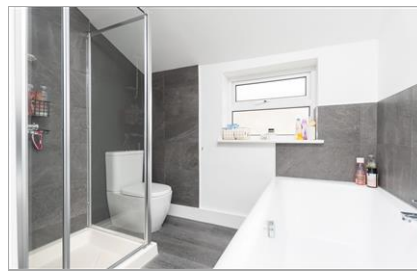
Price
£375,000

Freehold

3x  1x  1x 

**Bartlett Road,
Gravesend, Kent, DA11**

Wards
Helping you move forwards



Main features

- Charming terraced home with period features
- Usable loft space
- Extended kitchen/dining area
- Upstairs bathroom
- Within walking distance of Gravesend high speed train station

Accommodation

GROUND FLOOR

Entrance Hall

Lounge/Dining Area: 25'9 into bay x 11'8 at widest point (7.85m x 3.56m)

Kitchen : 25'7 x 8'9 (7.80m x 2.67m)

FIRST FLOOR

Landing

Bedroom 1: 11'7 x 8'5 at widest point (3.53m x 2.57m)

Bedroom 2: 11'6 x 9'3 (3.51m x 2.82m)

Bedroom 3: 8'0 x 4'9 (2.44m x 1.45m)

Bathroom

SECOND FLOOR

Loft Room : 12'9 x 10'6 (3.89m x 3.20m)

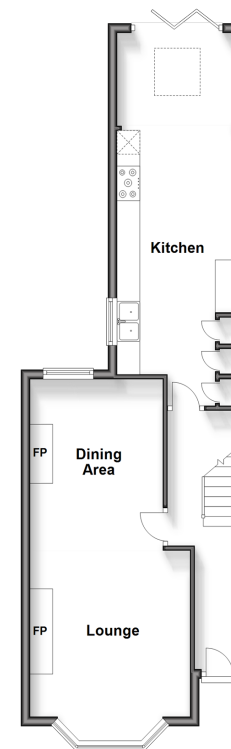
OUTSIDE

Front Garden

Rear Garden

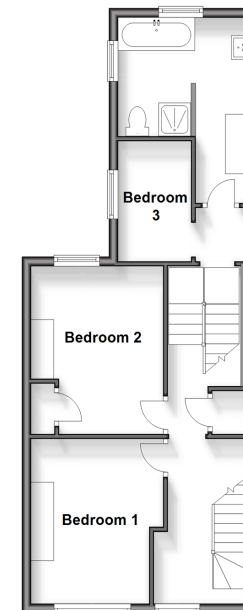
Ground Floor

Approx. 50.9 sq. metres (548.1 sq. feet)



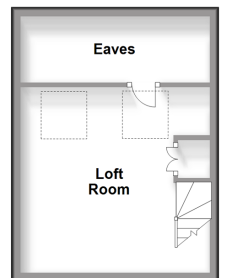
First Floor

Approx. 46.9 sq. metres (505.3 sq. feet)



Second Floor

Approx. 22.4 sq. metres (240.8 sq. feet)



Call Gravesend - 01474 352417 ■ wardsofkent.co.uk

■ Legal advice should be taken to verify fixtures/fittings, planning, alterations and/or lease details
 ■ Through a Homewise Home For Life Plan people aged 60+ can secure this property for up to 59% less, by purchasing a Lifetime Lease.

■ Appliances & services are untested, dimensions are approximate and floor plans are not to scale



11140068/20240914/YD/NO