



Price
£450,000

Freehold

3x  1x  1x 

**Peggotty Close, Higham,
Rochester, Kent, ME3**

OVER 60?

Secure this property
for up to **59% less!**

Wards
Helping you move forwards



Main features

- Extended semi-detached house
- Stunning kitchen/diner with bi-fold doors
- Large rear garden
- Downstairs cloakroom
- Situated in the leafy village of Higham

Accommodation

GROUND FLOOR

Entrance Porch

Lounge: 16'8 x 11'2 (5.08m x 3.41m)

Kitchen/Diner: 19'0 x 13'6 (5.80m x 4.12m)

Utility Room: 8'0 x 3'5 (2.44m x 1.04m)

Downstairs Cloakroom

FIRST FLOOR

Bedroom 1: 11'4 x 10'9 (3.46m x 3.28m)

Bedroom 2: 9'8 x 8'3 (2.95m x 2.52m)

Bedroom 3: 8'7 x 7'9 (2.62m x 2.36m)

Bathroom

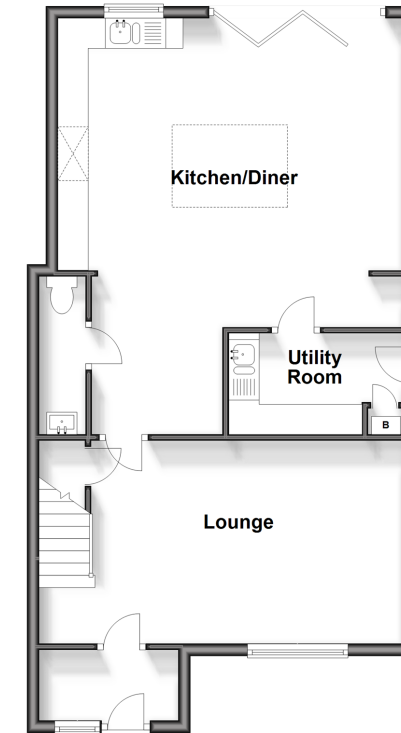
OUTSIDE

Driveway

Rear Garden

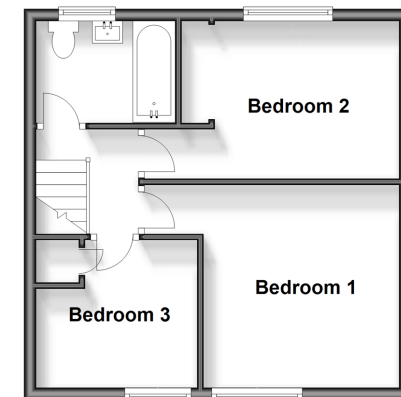
Ground Floor

Approx. 63.8 sq. metres (686.5 sq. feet)



First Floor

Approx. 36.5 sq. metres (393.1 sq. feet)



Call Gravesend - 01474 352417 ■ wardsof Kent.co.uk

- Legal advice should be taken to verify fixtures/fittings, planning, alterations and/or lease details
- Appliances & services are untested, dimensions are approximate and floor plans are not to scale
- Through a Homewise Home For Life Plan people aged 60+ can secure this property for up to 59% less, by purchasing a Lifetime Lease.



11125761/20240713/MM/NO