



Price
£400,000

Freehold

3x  1x  2x 

**Genesta Glade,
Gravesend, Kent, DA12**

Wards
Helping you move forwards



Main features

- Situated in a quiet cul-de-sac
- Extended living space
- Large front garden
- Potential to develop further subject to planning permission
- Offered for sale with no forward chain

Accommodation

GROUND FLOOR

Entrance Porch
 Entrance Hall
 Lounge : 14'7 x 12'2 (4.45m x 3.71m) plus 14'8 x 8'9 (4.47m x 2.67m)
 Dining Area: 14'2 x 8'0 (4.32m x 2.44m)
 Kitchen : 11'8 x 8'2 (3.56m x 2.49m)
 Bedroom 1: 12'8 x 11'1 (3.86m x 3.38m)
 Bedroom 2: 12'0 x 9'9 (3.66m x 2.97m)
 Bedroom 3: 11'3 x 7'8 (3.43m x 2.34m)
 Bathroom

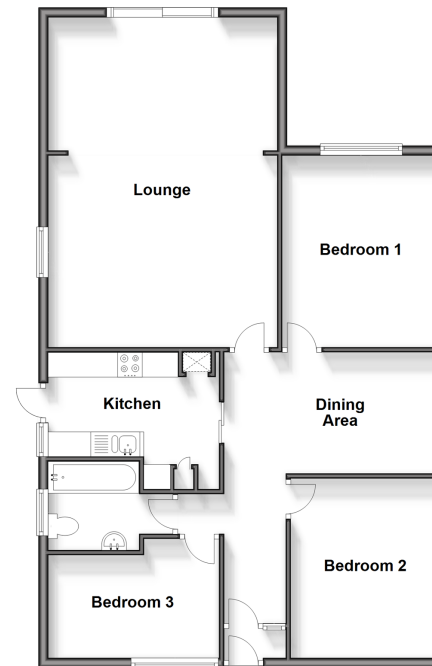
OUTBUILDING

Garage

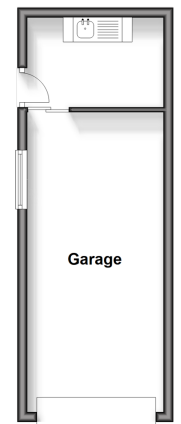
OUTSIDE

Driveway
 Front Garden
 Rear Garden

Ground Floor
 Approx. 94.3 sq. metres (1015.5 sq. feet)



Outbuilding
 Approx. 22.2 sq. metres (239.4 sq. feet)



Call Gravesend - 01474 352417 ■ wardsof Kent.co.uk

■ Legal advice should be taken to verify fixtures/fittings, planning, alterations and/or lease details

■ Appliances & services are untested, dimensions are approximate and floor plans are not to scale



11140098/20240807/YD/NO