



Price
£350,000

Freehold

3x  1x  2x 

**Barr Road, Gravesend,
Kent, DA12**

OVER 60?

Secure this property
for up to **59% less!**

Wards
Helping you move forwards



Main features

- Wonderful family home in a popular location
- Fantastic sized rear garden
- Potential to extend subject to planning permission
- Close by to shops and schools
- Offered for sale with no forward chain

Accommodation

GROUND FLOOR

Entrance Porch

Lounge : 14'4 x 11'7 into bay (4.37m x 3.53m)

Dining Area : 14'4 x 10'9 (4.37m x 3.28m)

Kitchen : 14'8 x 7'2 (4.47m x 2.19m)

Conservatory : 13'3 x 8'8 (4.04m x 2.64m)

FIRST FLOOR

Landing

Bedroom 2: 16'10 x 12'10 into bay (5.13m x 3.91m)

Bedroom 3: 10'7 x 9'0 (3.23m x 2.75m)

Shower Room

SECOND FLOOR

Bedroom 1: 14'4 x 8'11 (4.37m x 2.72m)

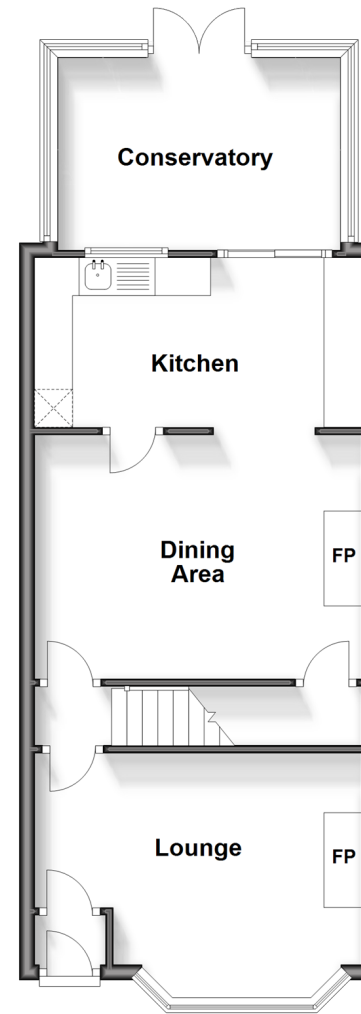
OUTSIDE

Front Garden

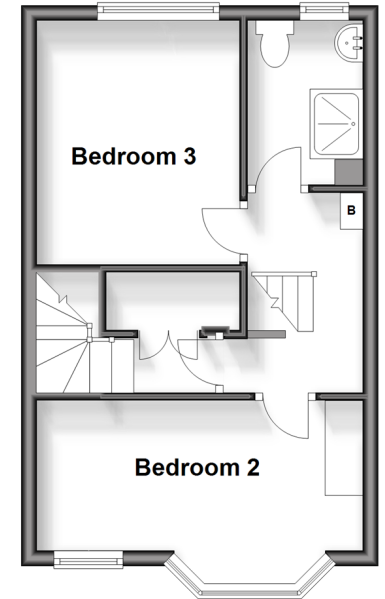
Off Road Parking

Rear Garden

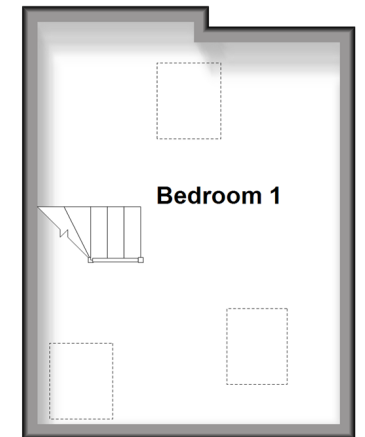
Ground Floor
Approx. 50.4 sq. metres (542.6 sq. feet)



First Floor
Approx. 30.4 sq. metres (327.0 sq. feet)



Second Floor
Approx. 20.6 sq. metres (221.6 sq. feet)



Call Gravesend - 01474 352417 ■ wardsof Kent.co.uk

- Legal advice should be taken to verify fixtures/fittings, planning, alterations and/or lease details
- Appliances & services are untested, dimensions are approximate and floor plans are not to scale
- Through a Homewise Home For Life Plan people aged 60+ can secure this property for up to 59% less, by purchasing a Lifetime Lease.



11140078/20240518/MM/SB