



Price
£325,000

Freehold

3x  1x  1x 

**St. Hilda's Way,
Gravesend, Kent, DA12**

OVER 60?

Secure this property
for up to **59% less!**

Wards
Helping you move forwards



Main features

- Ideal home for a growing family
- Open plan kitchen/dining area
- Downstairs cloakroom
- Car port to the rear for off road parking
- Offered for sale with no forward chain

Accommodation

GROUND FLOOR

Entrance Hall

Lounge : 15'7 x 11'3 (4.75m x 3.43m)

Kitchen/Diner: (L-shaped) 11'7 x 11'6 (3.53m x 3.51m) plus 5'9 x 9'4 (1.75m x 2.85m)

Cloakroom

FIRST FLOOR

Landing

Bedroom 1: 13'7 x 10'0 (4.14m x 3.05m)

Bedroom 2: 12'6 x 9'9 (3.81m x 2.97m)

Bedroom 3: 9'6 x 6'8 (2.90m x 2.03m)

Bathroom

OUTSIDE

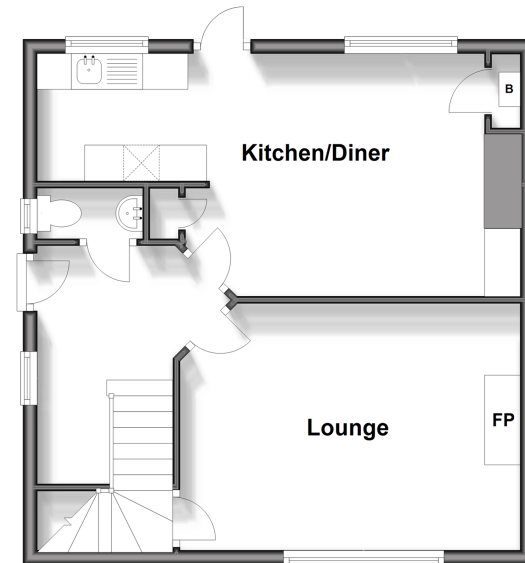
Front Garden

Driveway to the Rear

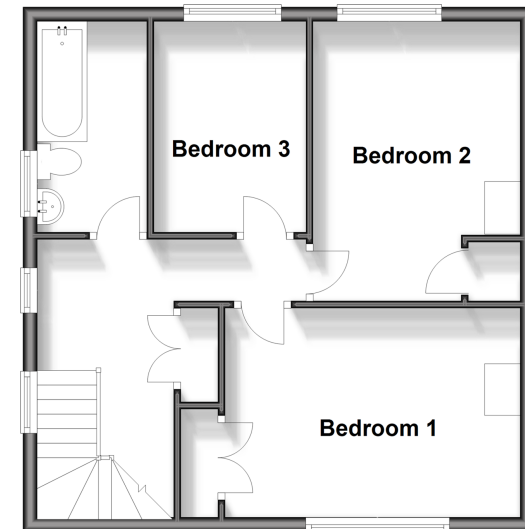
Car Port to the Rear

Rear Garden

Ground Floor
Approx. 46.9 sq. metres (504.9 sq. feet)



First Floor
Approx. 46.9 sq. metres (504.9 sq. feet)



Call Gravesend - 01474 352417 ■ wardsof Kent.co.uk

- Legal advice should be taken to verify fixtures/fittings, planning, alterations and/or lease details
- Appliances & services are untested, dimensions are approximate and floor plans are not to scale
- Through a Homewise Home For Life Plan people aged 60+ can secure this property for up to 59% less, by purchasing a Lifetime Lease.



11140025/20240418/MM/NO