



Price

£725,000

Freehold

3x  1x  1x 

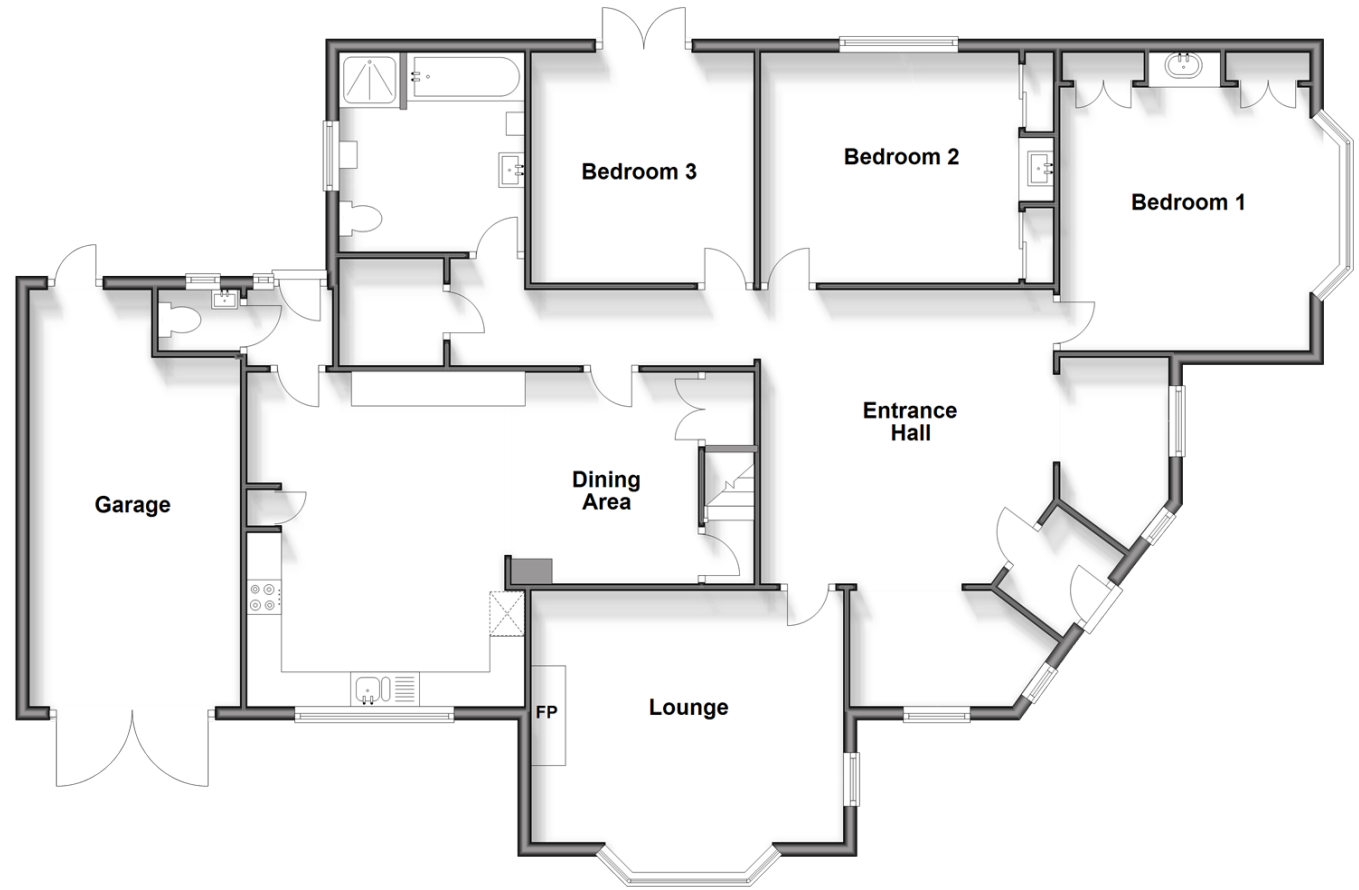
Kings Drive, Gravesend,  
Kent, DA12

**OVER 60?**

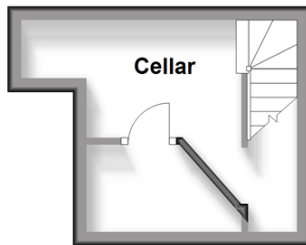
Secure this property  
for up to **59% less!**

*Wards*  
Helping you move forwards

**Ground Floor**  
Approx. 156.4 sq. metres (1683.3 sq. feet)



**Cellar**  
Approx. 10.2 sq. metres (109.5 sq. feet)



## Accommodation

### GROUND FLOOR

Entrance Hall : 13'9 x 13'9 (4.19m x 4.19m)

Lounge: 14'8 into bay x 13'8 (4.47m x 4.17m)

Inner Hallway

Dining Area: 9'9 x 9'4 (2.97m x 2.85m)

Kitchen : 13'3 x 13'2 (4.04m x 4.02m)

Cloakroom

Bathroom : 9'4 x 8'9 (2.85m x 2.67m)

Bedroom 3: 10'9 x 10'9 (3.28m x 3.28m)

Bedroom 2: 11'8 x 10'9 (3.56m x 3.28m)

Bedroom 1: 13'8 up to fitted wardrobes x 12'8 into bay (4.17m x 3.86m)

### CELLAR

Cellar Room

### OUTSIDE

Front Garden

Driveway

Garage

Rear Garden





## Main features

- Stunning once in a lifetime detached bungalow
- Large wraparound garden
- Open plan kitchen/dining area
- Gorgeous open entrance hall
- Situated in the popular Singlewell Road area



### Nearest Schools

Primary Schools: Whitehill Primary 0.4 miles, Kings Farm Primary 0.5 miles

Secondary Schools: The Ifield School 0.5 miles, Saint George's C of E School 1.0 miles

### Transport Information

Train Stations: Gravesend 1.7 miles, Northfleet 3.1 miles, Swanscombe 3.1 miles

### Address

Kings Drive, Gravesend, Kent, DA12

### Directions

For directions to this property please contact us.





*Wards*  
Helping you move forwards

Call Gravesend Branch 01474 352417 ■ [wardsofkent.co.uk](http://wardsofkent.co.uk)



- Legal advice should be taken to verify fixtures/fittings, planning, alterations and/or lease details
- Appliances & services are untested, dimensions are approximate and floor plans are not to scale
- Through a Homewise Home For Life Plan people aged 60+ can secure this property for up to 59% less, by purchasing a Lifetime Lease.

EPC RATING	CURRENT:	POTENTIAL:
	E(50)	C(77)

11139767/20240312/MM/NO