



Price
£165,000

Leasehold

1x  1x  1x 

**The Hollies, Gravesend,
Kent, DA12**

OVER 60?

Secure this property
for up to **59% less!**

Wards
Helping you move forwards



Main features

- A well presented second floor flat ideal for first time buyers
- Car port
- Private balcony offering outdoor space
- Within walking distance to local amenities
- Close by to motorway networks

Accommodation

SECOND FLOOR

Entrance Hall

Lounge/Diner: (L-shaped) 13'0 x 10'1 (3.97m x 3.08m) plus 8'5 x 7'9 (2.57m x 2.36m)

Balcony

Kitchen : 12'7 x 7'6 (3.84m x 2.29m)

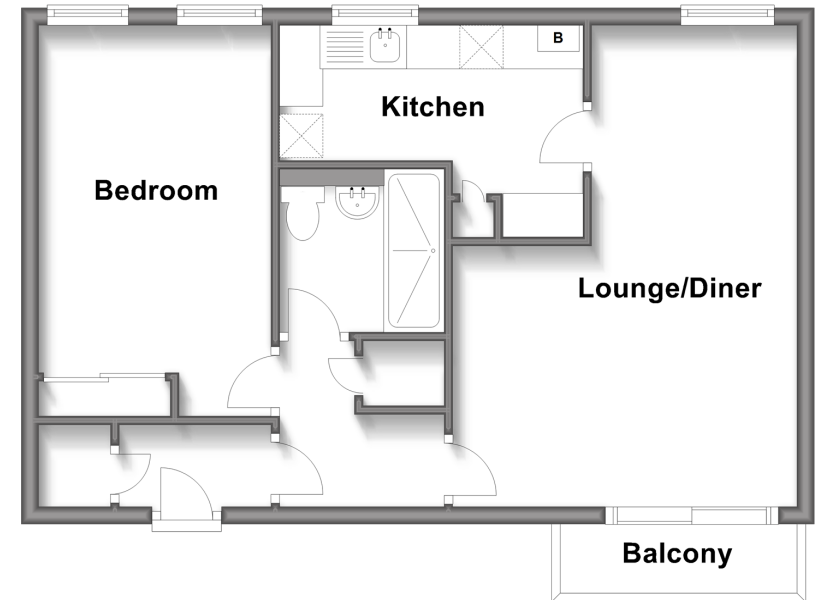
Bedroom: 14'2 x 9'0 (4.32m x 2.75m)

Shower Room

OUTSIDE

Allocated Car Port

Second Floor
Approx. 48.4 sq. metres (521.2 sq. feet)



Call Gravesend - 01474 352417 ■ wardsofkent.co.uk

■ Legal advice should be taken to verify fixtures/fittings, planning, alterations and/or lease details
 ■ Through a Homewise Home For Life Plan people aged 60+ can secure this property for up to 59% less, by purchasing a Lifetime Lease.

■ Appliances & services are untested, dimensions are approximate and floor plans are not to scale



11139956/20240304/NO/SB