



Price
£450,000

Freehold

4x  2x  1x 

**Caliph Close,
Gravesend, Kent, DA12**

OVER 60?

Secure this property
for up to **59% less!**

Wards
Helping you move forwards



Main features

- **Extended semi-detached house**
- **Situated in the popular Riverview Park area**
- **Within walking distance of excellent schools**
- **Open plan kitchen/dining area looking out over the garden**
- **Only a short walk to the shops and a short drive to the A2 motorway**

Accommodation

GROUND FLOOR

Entrance Hall

Lounge : 14'1 x 11'8 (4.30m x 3.56m)

Kitchen : 18'1 x 8'8 (5.52m x 2.64m)

Dining Area: 11'0 x 8'8 (3.36m x 2.64m)

Utility Room : 8'2 x 5'6 (2.49m x 1.68m)

Shower Room

SPLIT LEVEL FIRST FLOOR

Landing

Bedroom 1: 12'0 x 11'5 (3.66m x 3.48m)

Bedroom 2: 12'5 x 8'5 (3.79m x 2.57m)

Bedroom 3: 11'4 x 9'7 (3.46m x 2.92m)

Bedroom 4: 12'4 x 4'8 (3.76m x 1.42m)

Bathroom

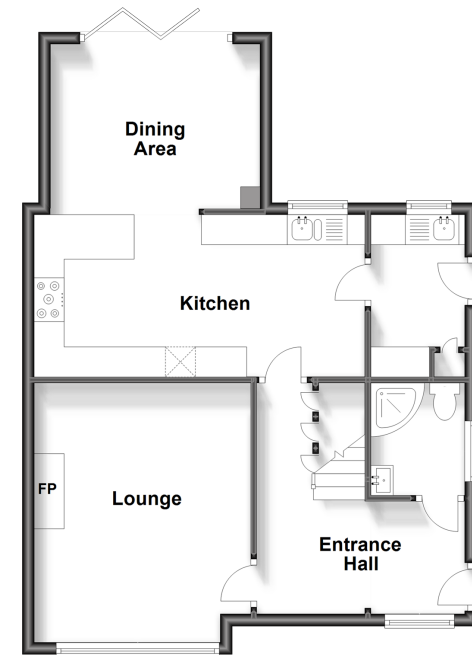
OUTSIDE

Driveway

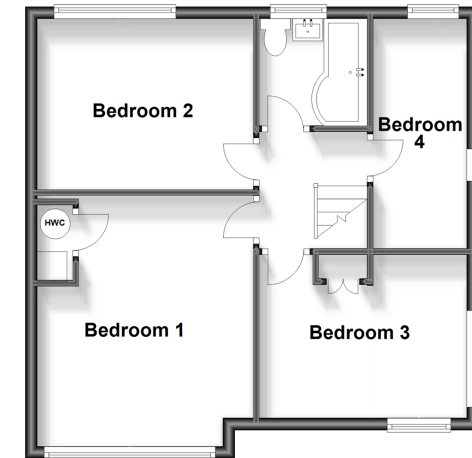
Rear Garden

Garage to the Rear

Ground Floor
Approx. 59.1 sq. metres (636.5 sq. feet)



Split Level First Floor
Approx. 49.2 sq. metres (529.5 sq. feet)



Call Gravesend - 01474 352417 ■ wardsokent.co.uk

- The seller is a person connected with Wards as defined in the Estate Agents Act 1979
- Legal advice should be taken to verify fixtures/fittings, planning, alterations and/or lease details
- Appliances & services are untested, dimensions are approximate and floor plans are not to scale
- Through a Homewise Home For Life Plan people aged 60+ can secure this property for up to 59% less, by purchasing a Lifetime Lease.



11139701/20230809/MM/NO