



**Price**  
**£290,000**

**Freehold**

4x  1x  2x 

**Gillingham Road,  
Gillingham, Kent, ME7**

**OVER 60?**

Secure this property  
for up to **59% less!**

*Wards*  
Helping you move forwards



## Main features

- Gas, central heating and double glazing
- Spacious modern gloss finish kitchen
- Useful cellar
- Situated within walking distance of Gillingham High Street and main line station
- Victorian end of terrace with additional loft room

## Accommodation

### GROUND FLOOR

Lounge: 13'4 into bay x 12'7 (4.07m x 3.84m)  
 Dining room: 11'4 x 9'9 (3.46m x 2.97m)  
 Kitchen: 10'9 x 7'8 (3.28m x 2.34m)  
 Lobby/Utility Room  
 Bathroom

### BASEMENT

Cellar: 12'9 into bay x 11'9 (3.89m x 3.58m)

### FIRST FLOOR

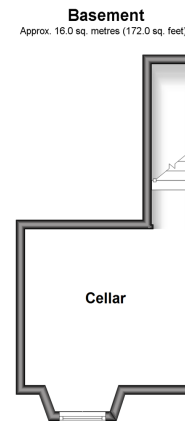
Landing  
 Bedroom 4: 11'2 x 7'5 (3.41m x 2.26m)  
 Bedroom 2: 11'4 x 7'6 (3.46m x 2.29m)  
 Bedroom 3: 7'9 x 7'7 (2.36m x 2.31m)  
 Cloakroom

### SECOND FLOOR

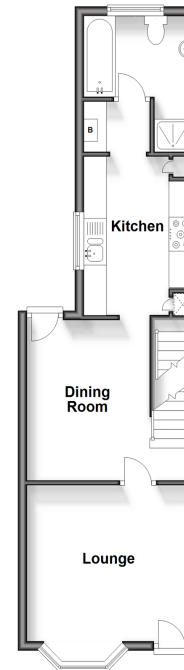
Bedroom 1: 12'5 x 12'3 (3.79m x 3.74m)

### OUTSIDE

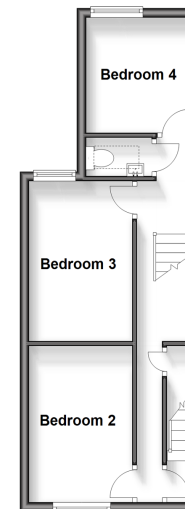
Front Garden  
 Rear Garden



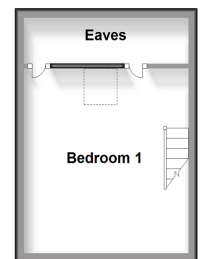
**Ground Floor**  
 Approx. 40.9 sq. metres (440.6 sq. feet)



**First Floor**  
 Approx. 33.5 sq. metres (361.0 sq. feet)



**Second Floor**  
 Approx. 18.4 sq. metres (198.4 sq. feet)



Call Gillingham - 01634 851191 ■ [wardsofkent.co.uk](http://wardsofkent.co.uk)

■ Legal advice should be taken to verify fixtures/fittings, planning, alterations and/or lease details  
 ■ Through a Homewise Home For Life Plan people aged 60+ can secure this property for up to 59% less, by purchasing a Lifetime Lease.

■ Appliances & services are untested, dimensions are approximate and floor plans are not to scale