



Guide Price
£230,000

Freehold

2x  1x  1x 

**Arden Street,
Gillingham, Kent, ME7**

OVER 60?

Secure this property
for up to **59% less!**

Wards
Helping you move forwards



Main features

- Chain free
- Refurbished to create a lovely home
- Ideal first time buy
- Close to the Great Lines parkland
- Situated within walking distance to Gillingham High Street and main line station

Accommodation

GROUND FLOOR

Lounge/Diner: 24'5 x 12'3 (7.45m x 3.74m)

Kitchen: 9'6 x 7'2 (2.90m x 2.19m)

BASEMENT

Cellar: 12'3 x 9'9 (3.74m x 2.97m)

SPLIT LEVEL FIRST FLOOR

Landing

Bedroom 1: 12'3 x 9'9 (3.74m x 2.97m)

Bedroom 2: 13'7 x 9'4 (4.14m x 2.85m)

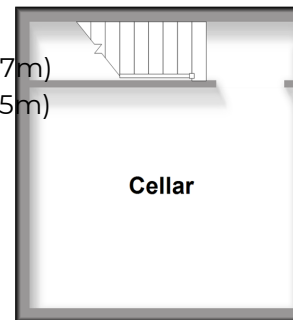
En-suite Shower Room

OUTSIDE

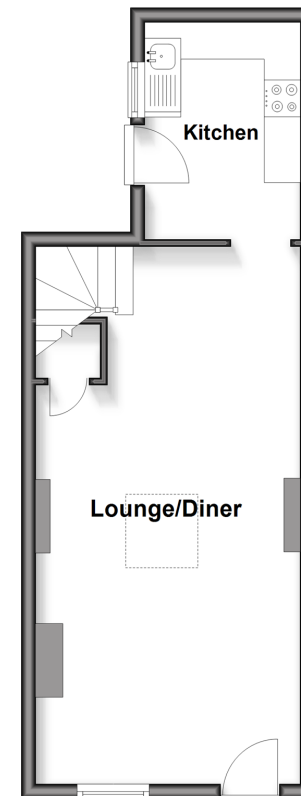
Front Garden

Rear Garden

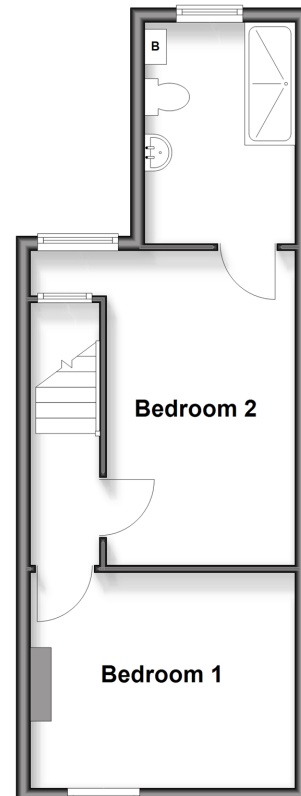
Basement
Approx. 14.3 sq. metres (153.7 sq. feet)



Ground Floor
Approx. 33.4 sq. metres (359.2 sq. feet)



Split Level First Floor
Approx. 33.3 sq. metres (358.2 sq. feet)



Call Gillingham - 01634 851191 ■ wardsofkent.co.uk

- Legal advice should be taken to verify fixtures/fittings, planning, alterations and/or lease details
- Appliances & services are untested, dimensions are approximate and floor plans are not to scale
- Through a Homewise Home For Life Plan people aged 60+ can secure this property for up to 50% less, by purchasing a Lifetime Lease.



10920717/20251128/ML/GS