



**OVER 60?**

Secure this property  
for up to **59% less!**

**Guide Price**  
**£300,000**

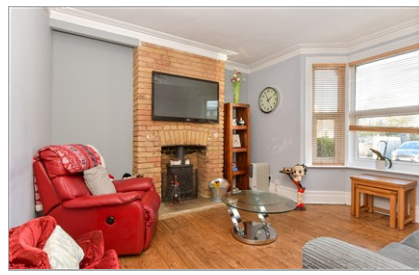
**Freehold**

3x  2x  2x 

**Chester Road,  
Gillingham, Kent, ME7**

*Wards*  
Helping you move forwards





## Main features

- Chain free spacious Edwardian terraced house with large living space
- Walking distance to local schools
- Situated close to amenities and excellent road access
- Rear garden, perfect for entertaining family and guests
- Handy cellar room, perfect for storage space

## Accommodation

### GROUND FLOOR

Porch  
Entrance Hall  
Lounge: 13'5 into bay x 13'3 (4.09m x 4.04m)  
Dining Room: 11'6 x 10'6 (3.51m x 3.20m)  
Kitchen: 15'0 x 9'5 (4.58m x 2.87m)  
Bathroom

### BASEMENT

Cellar: 10'0 into bay x 9'3 (3.05m x 2.82m)

### FIRST FLOOR

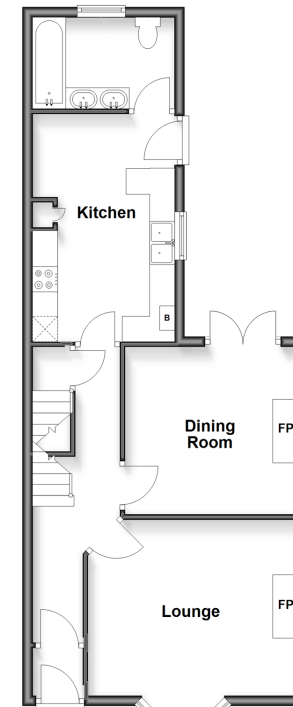
Landing  
Bedroom 1: 16'11 x 11'10 (5.16m x 3.61m)  
Bedroom 2: 10'7 x 10'0 (3.23m x 3.05m)  
Shower Room  
Bedroom 3: 10'0 x 9'3 (3.05m x 2.82m)

### OUTSIDE

Front Garden  
Rear Garden

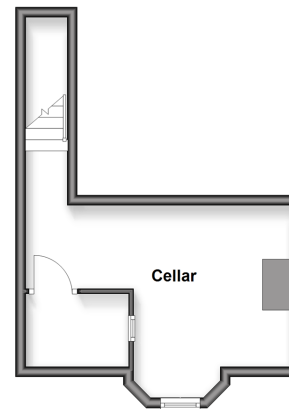
### Ground Floor

Approx. 54.9 sq. metres (591.1 sq. feet)



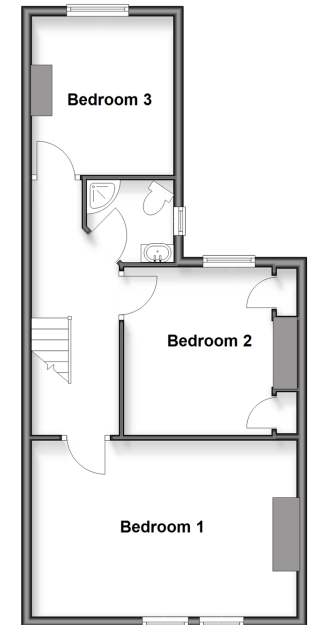
### Basement

Approx. 20.8 sq. metres (223.7 sq. feet)



### First Floor

Approx. 50.3 sq. metres (541.8 sq. feet)



Call Gillingham - 01634 851191 ■ [wardsofkent.co.uk](http://wardsofkent.co.uk)

- Legal advice should be taken to verify fixtures/fittings, planning, alterations and/or lease details
- Through a Homewise Home For Life Plan people aged 60+ can secure this property for up to 50% less, by purchasing a Lifetime Lease

- Appliances & services are untested, dimensions are approximate and floor plans are not to scale



11021246/20251218/ML/HF