



**OVER 60?**

Secure this property  
for up to **59% less!**

**Price**

**£190,000**

**Leasehold**

2x  1x  1x 

**The Peninsula, Pegasus  
Way, Gillingham, Kent,  
ME7**

*Wards*  
Helping you move forwards





## Main features

- 5th floor apartment
- Great riverside views
- Balcony
- Superbly presented throughout, with great commuter lines into London
- Lovely development with excellent road access

## Accommodation

### FIFTH FLOOR

Entrance Hall

Bathroom

Bedroom 1: 12'9 x 10'2 (3.89m x 3.10m)

Bedroom 2: 12'9 x 7'10 (3.89m x 2.39m)

Lounge/Diner/Kitchen: 22'0 x 13'1 (6.71m x 3.99m)

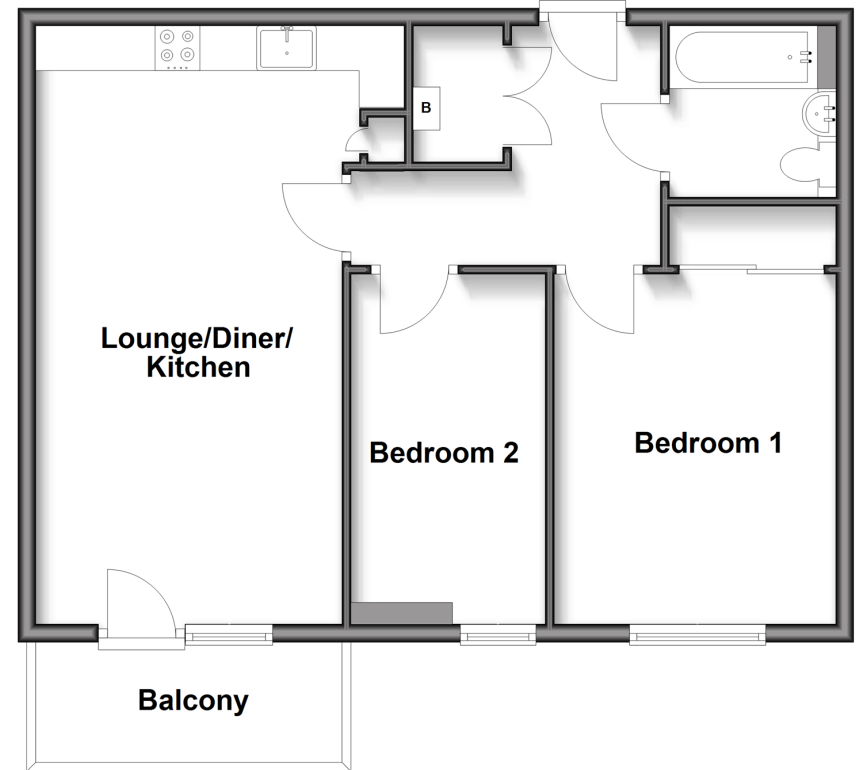
Balcony

### OUTSIDE

Allocated Parking

### Fifth Floor

Approx. 59.4 sq. metres (639.4 sq. feet)



**Call Gillingham - 01634 851191 ■ [wardsofkent.co.uk](http://wardsofkent.co.uk)**

- Legal advice should be taken to verify fixtures/fittings, planning, alterations and/or lease details
- Appliances & services are untested, dimensions are approximate and floor plans are not to scale
- Through a Homewise Home For Life Plan people aged 60+ can secure this property for up to 59% less, by purchasing a Lifetime Lease.



10927519/20250617/ML/AC