



OVER 60?

Secure this property
for up to **59% less!**

Price
£300,000

Freehold

3x  2x  1x 

**Gordon Road,
Gillingham, Kent, ME7**

Wards
Helping you move forwards



Main features

- Gas central heating & double glazing
- Cellar room
- Modern gloss finish kitchen
- Superbly presented & modernised, making it an ideal first time buy
- Separate bedrooms Edwardian terrace with modern upstairs shower room & downstairs bathroom

Accommodation

GROUND FLOOR

Entrance Hall

Lounge: 15'1 x 10'2 (4.60m x 3.10m)

Dining Area: 12'0 x 10'2 (3.66m x 3.10m)

Kitchen: 11'8 x 7'8 (3.56m x 2.34m)

Bathroom

BASEMENT

Cellar Room: 14'7 x 13'0 (4.45m x 3.97m)

FIRST FLOOR

Landing

Bedroom 1: 15'11 x 13'2 (4.85m x 4.02m)

Bedroom 2: 11'9 x 8'3 (3.58m x 2.52m)

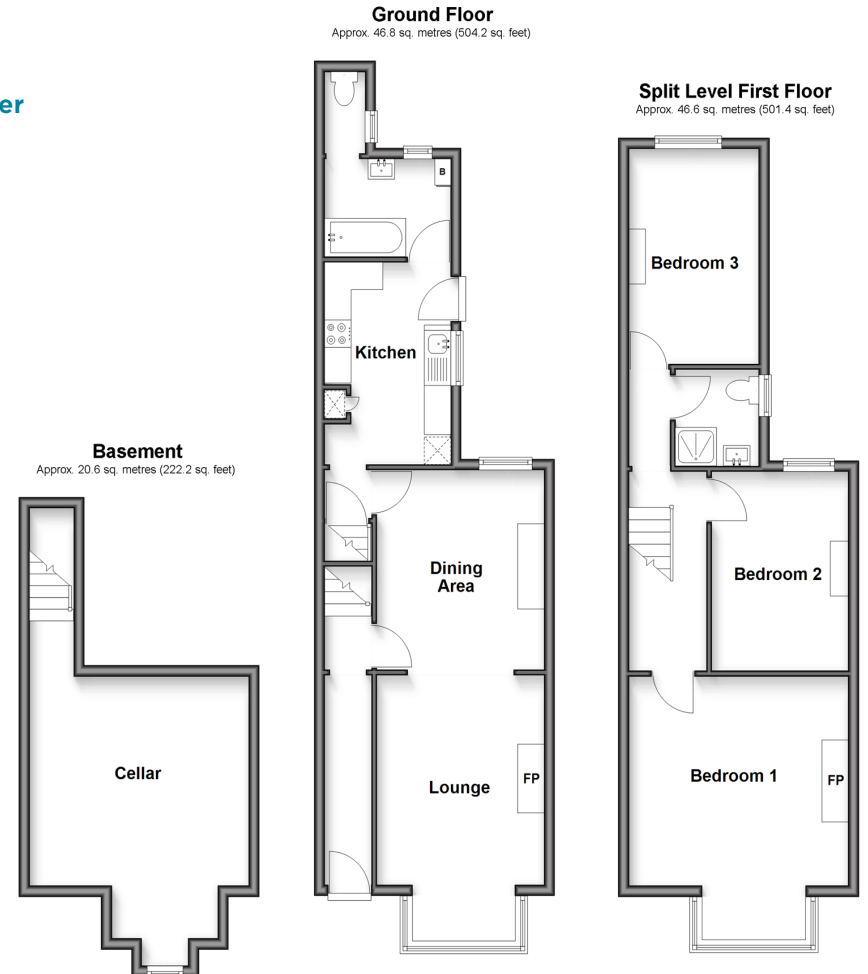
Shower Room

Bedroom 3: 11'9 x 7'8 (3.58m x 2.34m)

OUTSIDE

Front Garden

Rear Garden



Call Gillingham - 01634 851191 ■ wardsofkent.co.uk

- Legal advice should be taken to verify fixtures/fittings, planning, alterations and/or lease details
- Appliances & services are untested, dimensions are approximate and floor plans are not to scale
- Through a Homewise Home For Life Plan people aged 60+ can secure this property for up to 59% less, by purchasing a Lifetime Lease.



10927456/20250424/ML/GS