



Price
£170,000

Freehold

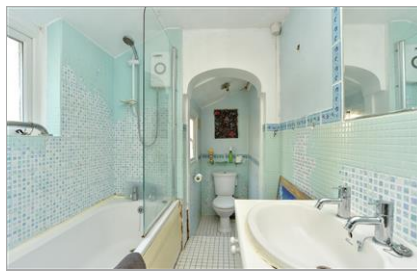
2x  1x  1x 

**Gardiner Street,
Gillingham, Kent, ME7**

OVER 60?

Secure this property
for up to **59% less!**

Wards
Helping you move forwards



Main features

- Gas central heating and double glazing
- Cellar
- Courtyard garden
- Ideal opportunity for an investor wanting a property for refurbishment
- Situated a 'stones throw' from Gillingham High Street and main line station

Accommodation

GROUND FLOOR

Lounge : 11'1 x 9'2 (3.38m x 2.80m)
Mid Hall
Kitchen: 11'2 x 9'2 (3.41m x 2.80m)
Bathroom

BASEMENT

Cellar: 11'0 x 9'2 (3.36m x 2.80m)

FIRST FLOOR

Landing
Bedroom 2: 11'2 x 9'3 (3.41m x 2.82m)
Bedroom 1: 11'3 x 9'3 (3.43m x 2.82m)

OUTSIDE

Rear Garden

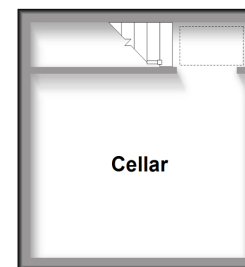
Ground Floor

Approx. 27.9 sq. metres (299.8 sq. feet)



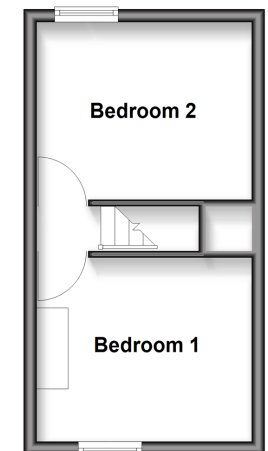
Basement

Approx. 12.3 sq. metres (132.9 sq. feet)



First Floor

Approx. 22.0 sq. metres (237.0 sq. feet)



Call Gillingham - 01634 851191 ■ wardsofkent.co.uk

■ Legal advice should be taken to verify fixtures/fittings, planning, alterations and/or lease details
■ Through a Homewise Home For Life Plan people aged 60+ can secure this property for up to 59% less, by purchasing a Lifetime Lease.

■ Appliances & services are untested, dimensions are approximate and floor plans are not to scale