



OVER 60?

Secure this property
for up to **59% less!**

Price
£375,000

Freehold

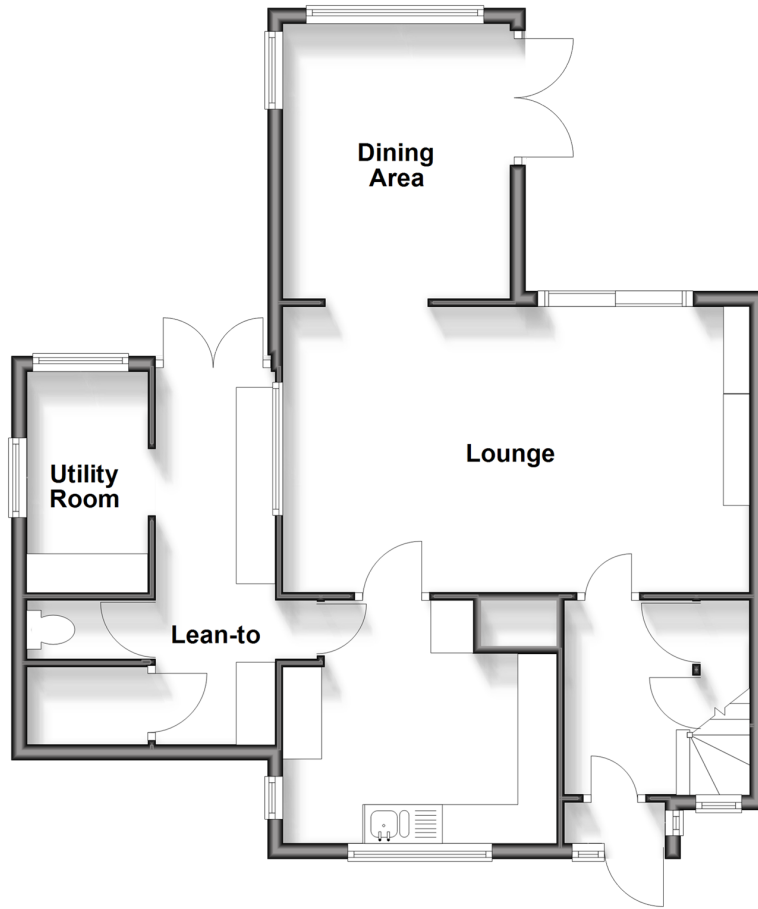
3x  1x  1x 

**Grange Road,
Gillingham, Kent, ME7**

Wards
Helping you move forwards

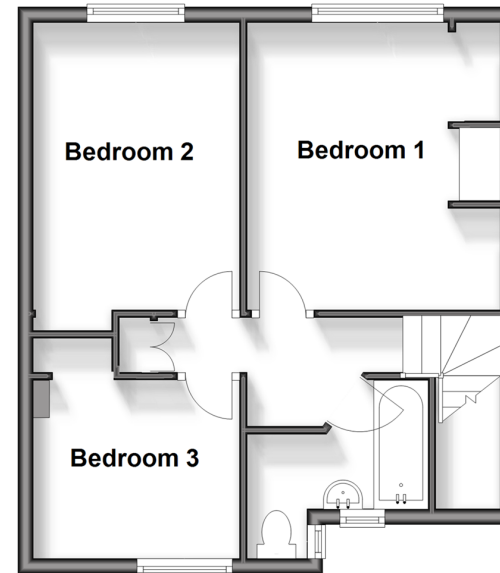
Ground Floor

Approx. 68.1 sq. metres (732.9 sq. feet)



First Floor

Approx. 40.4 sq. metres (434.5 sq. feet)



Accommodation

GROUND FLOOR

Porch
Hallway
Lounge: 20'0 x 12'0 (6.10m x 3.66m)
Dining Area: 12'0 x 9'7 (3.66m x 2.92m)
Kitchen: 11'9 x 10'5 (3.58m x 3.18m)
Lean To: 15'8 x 5'11 (4.78m x 1.80m)
Separate Toilet
Utility Room: 9'8 x 4'7 (2.95m x 1.40m)

FIRST FLOOR

Landing

Bedroom 1: 11'8 x 10'9 (3.56m x 3.28m)
Bedroom 2: 12'0 x 8'7 (3.66m x 2.62m)
Bedroom 3: 9'4 x 7'5 (2.85m x 2.26m)
Bathroom

OUTSIDE

Front Garden
Driveway
Garage: 18'5 x 7'6 (5.62m x 2.29m)
Rear Garden
Garden Cabin: 15'7 x 12'3 (4.75m x 3.74m)



Main features

- Spacious extended semi-detached family home on a large plot
- Great garden for entertaining with outside kitchen, bar & cabin
- Gas central heating & double glazing
- Garage & covered storage areas
- Good size kitchen plus utility room



Nearest Schools

Primary Schools: Woodlands Primary 0.7 miles, Saxon Way Primary 0.8 miles, St Mary's Catholic Primary 1.0 miles

Secondary Schools: The Robert Napier School 1.1 miles,



Transport Information

Train Stations: Gillingham 1.2 miles, Rainham 3.2 miles, Chatham 4.1 miles



Address

Grange Road, Gillingham, Kent, ME7



Directions

For directions to this property please contact us.



Wards
Helping you move forwards

Call Gillingham Branch 01634 851191 ■ wardsofkent.co.uk



■ Legal advice should be taken to verify fixtures/fittings, planning, alterations and/or lease details ■ Appliances & services are untested, dimensions are approximate and floor plans are not to scale
■ Through a Homewise Home For Life Plan people aged 60+ can secure this property for up to 59% less, by purchasing a Lifetime Lease.



10927426/20250322/ML/GS