



OVER 60?

Secure this property
for up to **59% less!**

Price
£325,000

Freehold

4x  2x  1x 

**Canterbury Street,
Gillingham, Kent, ME7**

Wards
Helping you move forwards

Accommodation

GROUND FLOOR

Entrance Hall

Lounge: 14'10 x 9'5 (4.52m x 2.87m)

Dining Area: 10'9 x 10'4 (3.28m x 3.15m)

Kitchen: 15'1 x 8'5 (4.60m x 2.57m)

FIRST FLOOR

Landing

Bedroom 4: 8'5 x 7'1 (2.57m x 2.16m)

Bathroom

Bedroom 3: 10'8 x 7'6 (3.25m x 2.29m)

Bedroom 2: 14'0 x 12'8 (4.27m x 3.86m) narrowing to 7'2 at narrowest point x 6'2 at narrowest point (2.19m x 1.88m)

SECOND FLOOR

Bedroom 1: 18'2 x 8'3 (5.54m x 2.52m) narrowing to 10'8 at narrowest point x 5'7 at narrowest point (3.25m x 1.70m)

En-suite

OUTSIDE

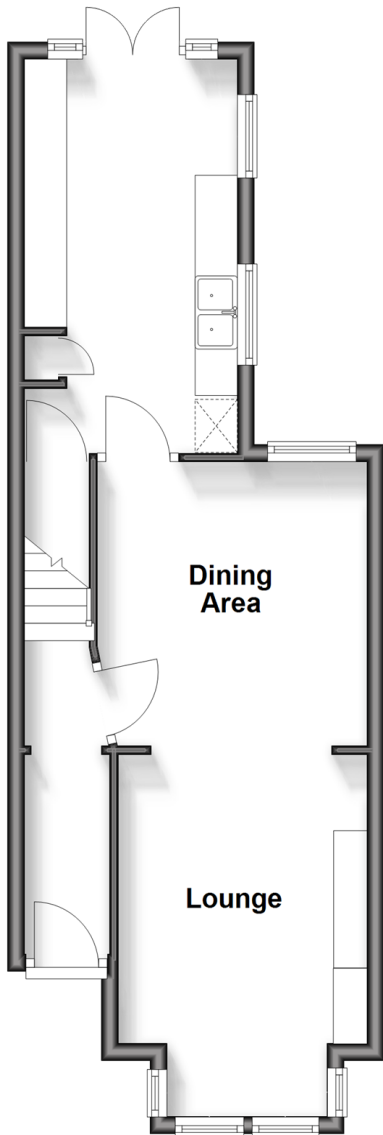
Front Garden

Rear Garden

Garage en-bloc

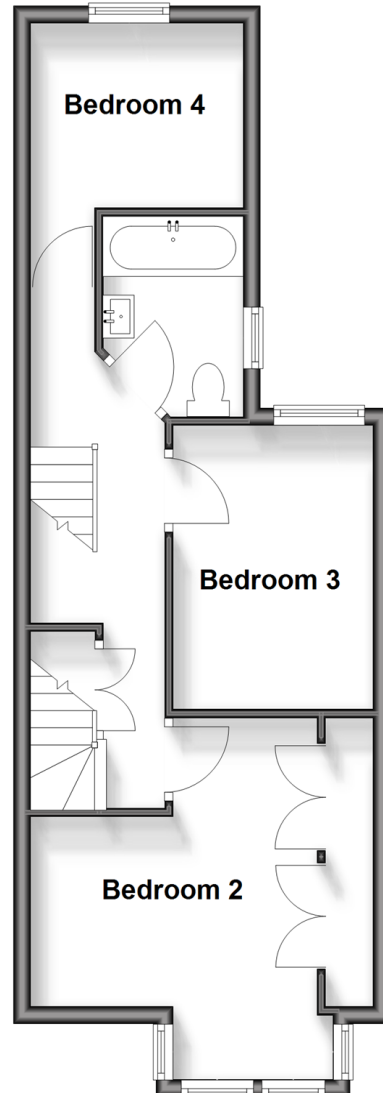
Ground Floor

Approx. 39.5 sq. metres (424.9 sq. feet)



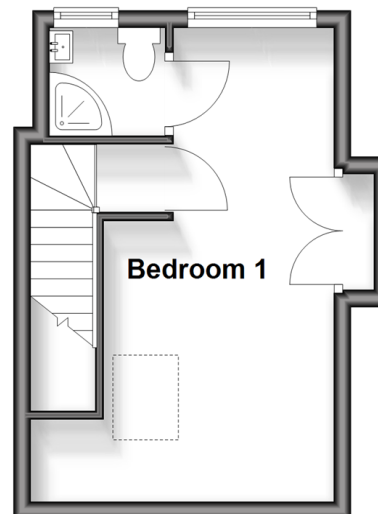
First Floor

Approx. 40.8 sq. metres (439.1 sq. feet)



Second Floor

Approx. 19.6 sq. metres (210.5 sq. feet)





Main features

- Imposing, extended and spacious Edwardian terraced house making a superb family home
- Garage en-bloc at rear
- Gas central heating and double glazing
- Separate upstairs bathroom and en-suite
- Situated in the popular Upper
- New consumer unit and fibre glass roof both under guarantee



Nearest Schools

Primary Schools: Byron Primary 0.2 miles, Luton Junior School 0.4 miles, Napier Community Primary and Nursery School 0.4 miles

Secondary Schools: Chatham Grammar School for Girls



Transport Information

Train Stations: Gillingham 0.8 miles, Chatham 1.4 miles, Rochester 1.9 miles



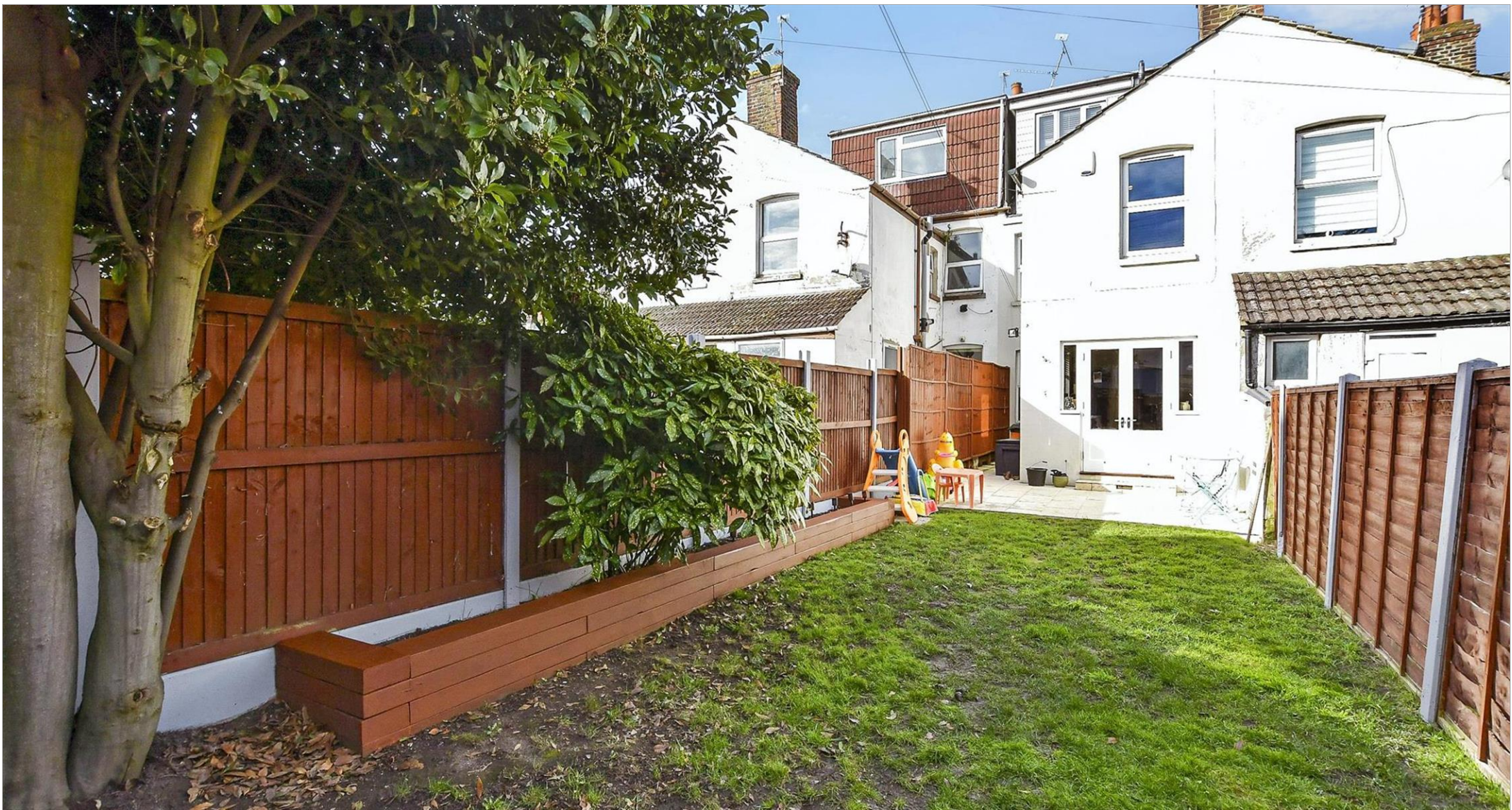
Address

Canterbury Street, Gillingham, Kent, ME7



Directions

For directions to this property please contact us.



Call Gillingham Branch 01634 851191 ■ wardsofkent.co.uk



- Legal advice should be taken to verify fixtures/fittings, planning, alterations and/or lease details
- Appliances & services are untested, dimensions are approximate and floor plans are not to scale
- Through a Homewise Home For Life Plan people aged 60+ can secure this property for up to 59% less, by purchasing a Lifetime Lease.



10925349/20250502/ML/GS