



OVER 60?

Secure this property
for up to **59% less!**

Price
£325,000

Freehold

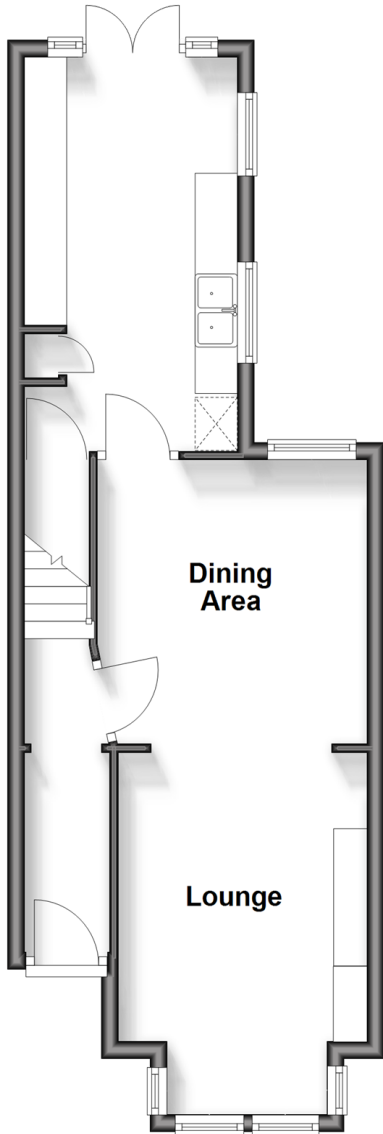
4x  2x  1x 

**Canterbury Street,
Gillingham, Kent, ME7**

Wards
Helping you move forwards

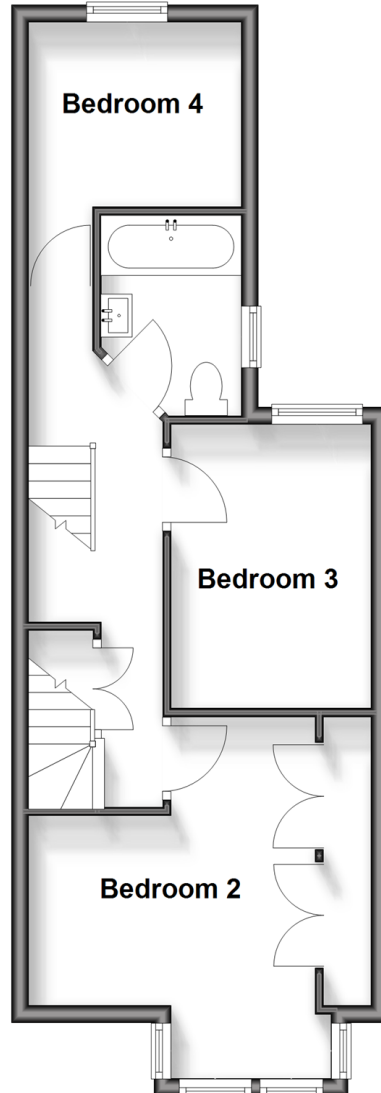
Ground Floor

Approx. 39.5 sq. metres (424.9 sq. feet)



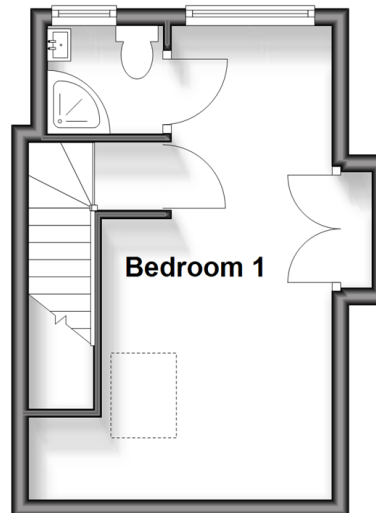
First Floor

Approx. 40.8 sq. metres (439.1 sq. feet)



Second Floor

Approx. 19.6 sq. metres (210.5 sq. feet)



Accommodation

GROUND FLOOR

Entrance Hall

Lounge: 14'10 x 9'5 (4.52m x 2.87m)

Dining Area: 10'9 x 10'4 (3.28m x 3.15m)

Kitchen: 15'1 x 8'5 (4.60m x 2.57m)

FIRST FLOOR

Landing

Bedroom 4: 8'5 x 7'1 (2.57m x 2.16m)

Bathroom

Bedroom 3: 10'8 x 7'6 (3.25m x 2.29m)

Bedroom 2: 14'0 x 12'8 (4.27m x 3.86m) narrowing to 7'2 at narrowest point x 6'2 at narrowest point (2.19m x 1.88m)

SECOND FLOOR

Bedroom 1 with en-suite: 18'2 x 8'3 (5.54m x 2.52m) narrowing to 10'8 at narrowest point x 5'7 at narrowest point (3.25m x 1.70m)

OUTSIDE

Front Garden

Rear Garden

Garage en-bloc



Main features

- Imposing, extended and spacious Edwardian terraced house making a superb family home
- Garage en-bloc at rear
- Gas central heating and double glazing
- Separate upstairs bathroom and en-suite
- Situated in the popular Upper
- New consumer unit and fibre glass roof both under guarantee



Nearest Schools

Primary Schools: Byron Primary 0.2 miles, Luton Junior School 0.4 miles, Napier Community Primary and Nursery School 0.4 miles

Secondary Schools: Chatham Grammar School for Girls



Transport Information

Train Stations: Gillingham 0.8 miles, Chatham 1.4 miles, Rochester 1.9 miles



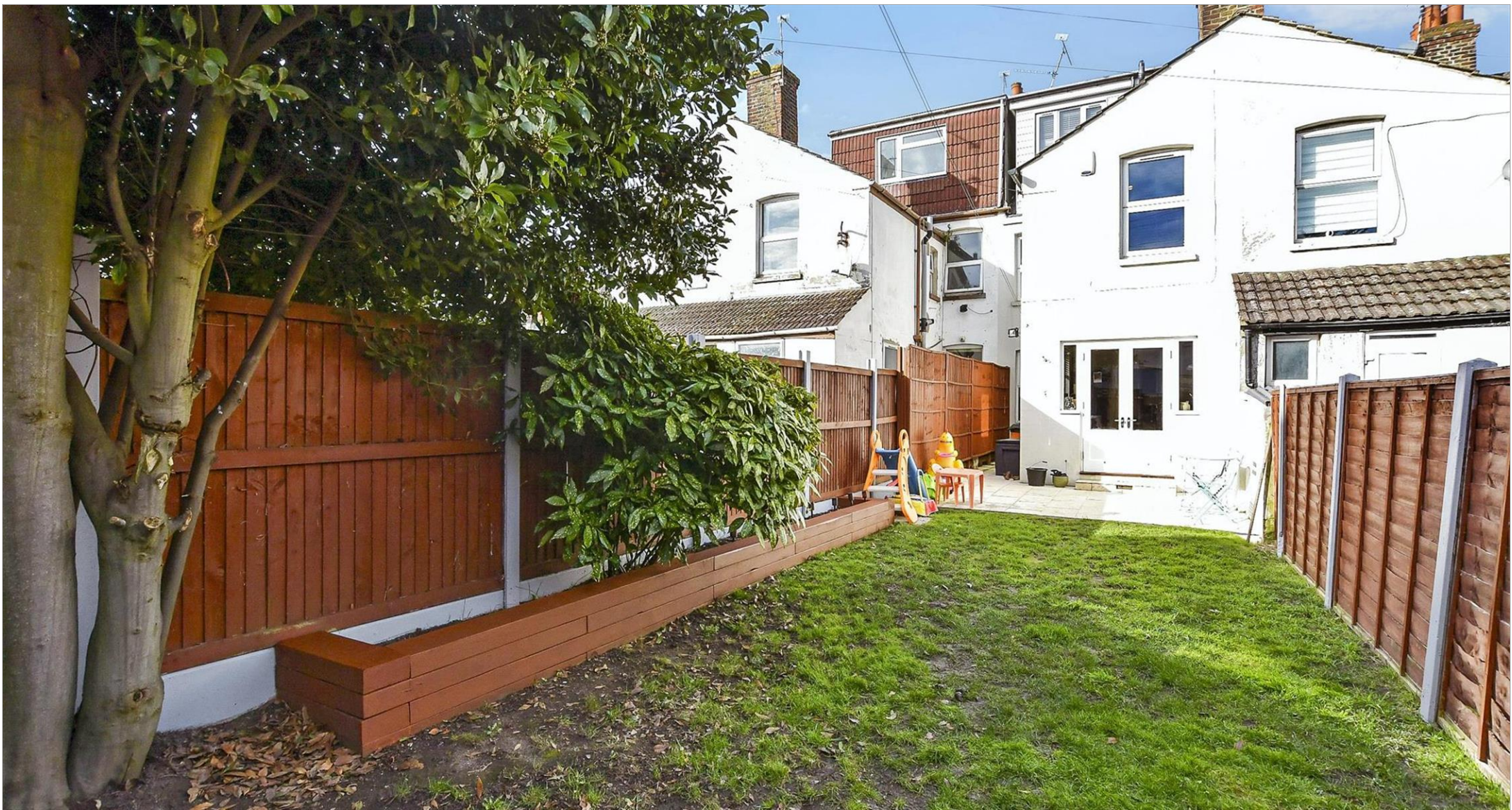
Address

Canterbury Street, Gillingham, Kent, ME7



Directions

For directions to this property please contact us.



Call Gillingham Branch 01634 851191 ■ wardsofkent.co.uk



- Legal advice should be taken to verify fixtures/fittings, planning, alterations and/or lease details
- Appliances & services are untested, dimensions are approximate and floor plans are not to scale
- Through a Homewise Home For Life Plan people aged 60+ can secure this property for up to 59% less, by purchasing a Lifetime Lease.



10925349/20250327/GS/GS