



**Price**

**£290,000**

**Freehold**

2x  1x  2x 

**Danes Hill, Gillingham,  
Kent, ME7**

**OVER 60?**

Secure this property  
for up to **59% less!**

*Wards*  
Helping you move forwards





## Main features

- Detached bungalow situated in a cul-de-sac position
- Gas central heating and double glazing
- Conservatory and manageable garden
- Off road parking and carport
- Ideal for a buyer looking for a flat plot

## Accommodation

### GROUND FLOOR

#### Porch

Lounge: 14'0 maximum (4.27m) narrowing to 7'8 minimum (2.34m) x 13'2 (4.02m)

Dining Room: 9'2 x 7'5 (2.80m x 2.26m)

Kitchen: 15'4 maximum x 6'6 minimum (4.68m x 1.98m) narrowing to 10'9 maximum x 4'3 minimum (3.28m x 1.30m)

Conservatory: 8'0 x 6'6 (2.44m x 1.98m)

#### Shower Room

Bedroom 1: 14'3 x 8'1 (4.35m x 2.47m)

Bedroom 2: 10'1 x 10'0 (3.08m x 3.05m)

### OUTSIDE

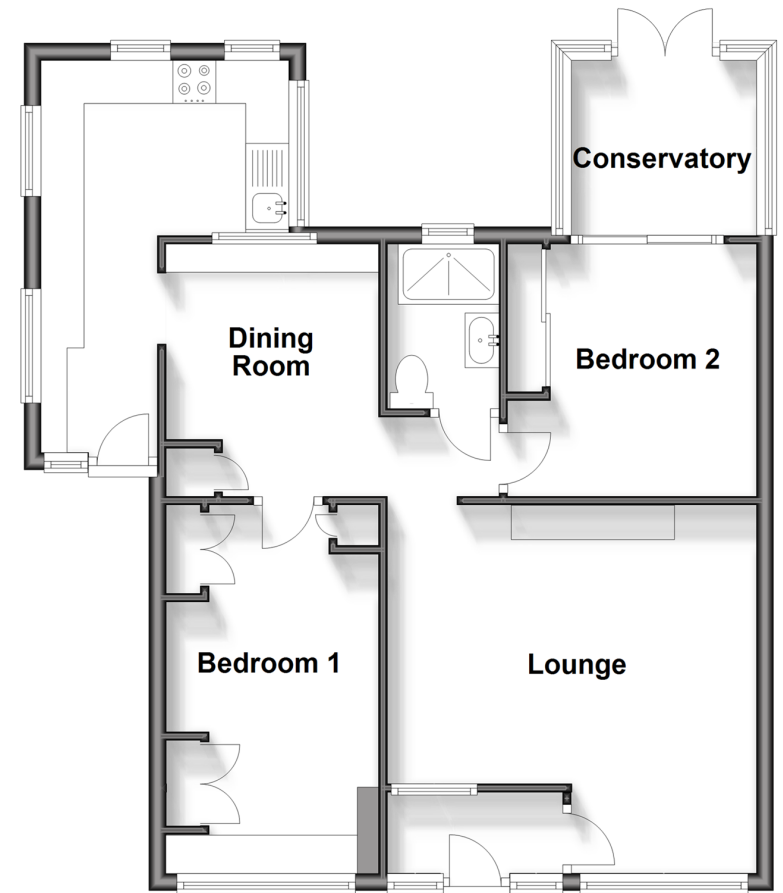
#### Front Garden

#### Off road parking & car port

#### Rear Garden

## Ground Floor

Approx. 64.5 sq. metres (694.7 sq. feet)



**Call Gillingham - 01634 851191 ■ [wardsofkent.co.uk](http://wardsofkent.co.uk)**

- Legal advice should be taken to verify fixtures/fittings, planning, alterations and/or lease details
- Appliances & services are untested, dimensions are approximate and floor plans are not to scale
- Through a Homewise Home For Life Plan people aged 60+ can secure this property for up to 59% less, by purchasing a Lifetime Lease.



10927177/20250224/ML/GS