



Price
£270,000

Freehold

3x  1x  1x 

**Balmoral Road,
Gillingham, Kent, ME7**

OVER 60?

Secure this property
for up to **59% less!**

Wards
Helping you move forwards



Main features

- Victorian terraced house with separate bedrooms and upstairs bathroom
- Modern kitchen and bathroom
- Gas central heating and double glazing
- Walking distance of Gillingham High Street and main line station
- Chain free

Accommodation

SPLIT LEVEL GROUND FLOOR

Hallway

Lounge: 13'3 into bay x 10'0 (4.04m x 3.05m)

Dining Area: 12'4 x 10'0 (3.76m x 3.05m)

Kitchen: 17'4 x 8'11 (5.29m x 2.72m)

BASEMENT

Cellar: 13'2 x 13'1 into bay (4.02m x 3.99m)

FIRST FLOOR

Landing

Bedroom 1: 13'4 x 11'4 (4.07m x 3.46m)

Bedroom 2: 12'4 x 8'0 (3.76m x 2.44m)

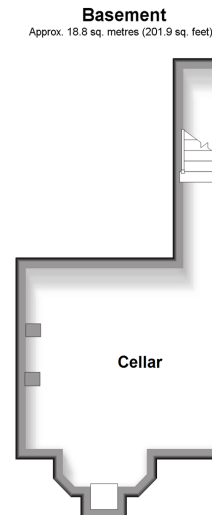
Bedroom 3: 11'10 x 8'0 (3.61m x 2.44m)

Bathroom

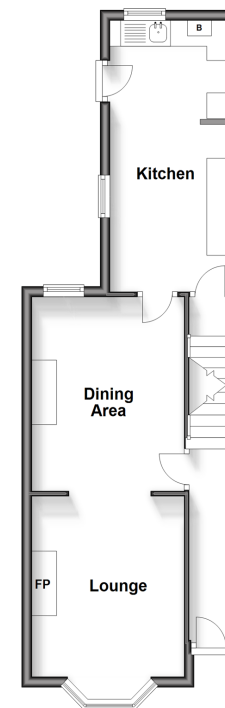
OUTSIDE

Front Garden

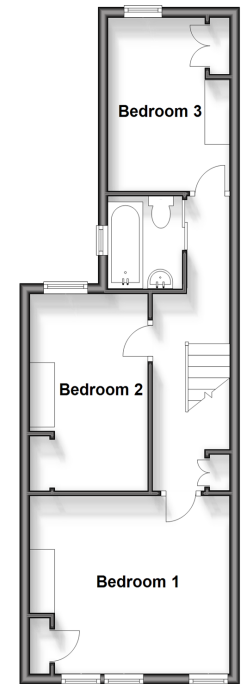
Rear Garden



Split Level Ground Floor
Approx. 42.2 sq. metres (453.7 sq. feet)



First Floor
Approx. 42.6 sq. metres (459.0 sq. feet)



Call Gillingham - 01634 851191 ■ wardsofkent.co.uk

- Legal advice should be taken to verify fixtures/fittings, planning, alterations and/or lease details
- Through a Homewise Home For Life Plan people aged 60+ can secure this property for up to 59% less, by purchasing a Lifetime Lease.

- Appliances & services are untested, dimensions are approximate and floor plans are not to scale



10927286/20250307/ML/GS