



**Price**  
**£260,000**

**Freehold**

3x  1x  2x 

**Albany Terrace, Albany  
Road, Gillingham, Kent,  
ME7**

*Wards*  
Helping you move forwards



## Main features

- A lovely Victorian property recently refurbished throughout
- Downstairs bathroom
- Easy access to Gillingham High Street and train station
- Ideal for first time buyers or buy-to-let investors
- No chain

## Accommodation

### SPLIT LEVEL GROUND FLOOR

Lounge : 12'4 into bay x 12'2 (3.76m x 3.71m)

Dining Room : 12'2 x 10'8 (3.71m x 3.25m)

Kitchen : 9'7 x 7'8 (2.92m x 2.34m)

Bathroom

### SPLIT LEVEL FIRST FLOOR

Landing

Bedroom 1: 12'2 x 10'9 (3.71m x 3.28m)

Bedroom 2: 12'2 x 9'9 (3.71m x 2.97m)

Bedroom 3: 9'2 x 7'9 (2.80m x 2.36m)

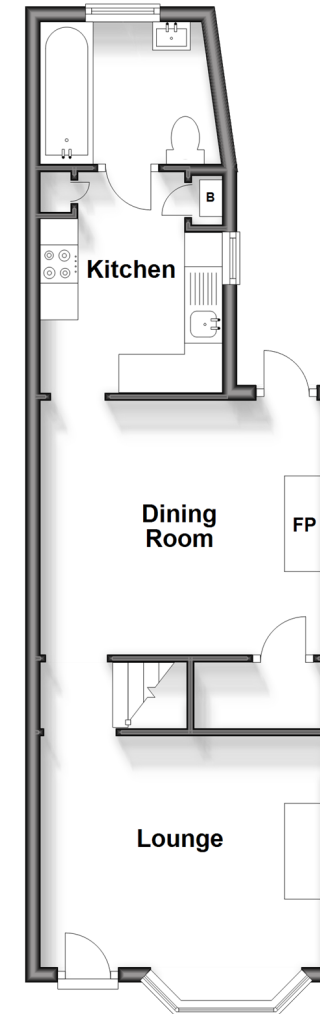
### OUTSIDE

Front Garden

Rear Garden

### Split Level Ground Floor

Approx. 39.6 sq. metres (426.0 sq. feet)



### Split Level First Floor

Approx. 34.9 sq. metres (375.2 sq. feet)



Call Gillingham - 01634 851191 ■ [wardsofkent.co.uk](http://wardsofkent.co.uk)

- Legal advice should be taken to verify fixtures/fitings, planning, alterations and/or lease details
- Appliances & services are untested, dimensions are approximate and floor plans are not to scale



11025361/20241014/CW/KG