



Price
£260,000

Freehold

2x  1x  1x 

**Windsor Court,
Gillingham, Kent, ME7**

OVER 60?

Secure this property
for up to **59% less!**

Wards
Helping you move forwards



Main features

- Gas central heating and double glazing
- Allocated parking and car port
- Modern fitted gloss finish kitchen
- Situated within walking distance of Gillingham High Street and mainline station

Accommodation

GROUND FLOOR

- Hallway
- Cloakroom
- Kitchen: 8'0 x 6'7 (2.44m x 2.01m)
- Lounge: 15'0 x 13'0 (4.58m x 3.97m)

FIRST FLOOR

- Landing
- Bedroom 1: 13'0 x 8'4 (3.97m x 2.54m)
- Bedroom 2: 13'2 x 8'4 (4.02m x 2.54m)
- Bathroom

OUTSIDE

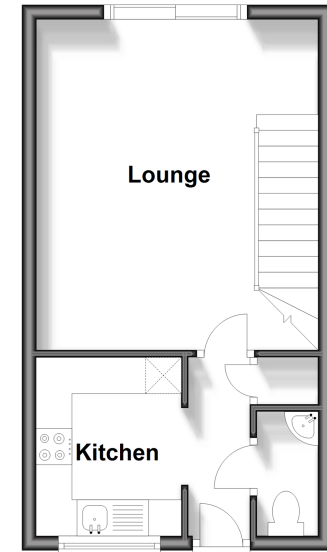
- Front Garden
- Rear Garden
- Allocated Parking
- Car Port

Call Gillingham - 01634 851191 ■ wardsof Kent.co.uk

- Legal advice should be taken to verify fixtures/fittings, planning, alterations and/or lease details
- Appliances & services are untested, dimensions are approximate and floor plans are not to scale
- Through a Homewise Home For Life Plan people aged 60+ can secure this property for up to 59% less, by purchasing a Lifetime Lease.

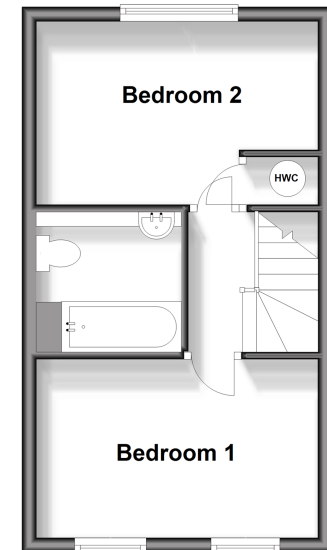
Ground Floor

Approx. 28.2 sq. metres (303.1 sq. feet)



First Floor

Approx. 28.0 sq. metres (301.9 sq. feet)



10927347/20241010/CW/GS