



Price
£360,000

Freehold

5x  2x  1x 

**Cornwall Road,
Gillingham, Kent, ME7**

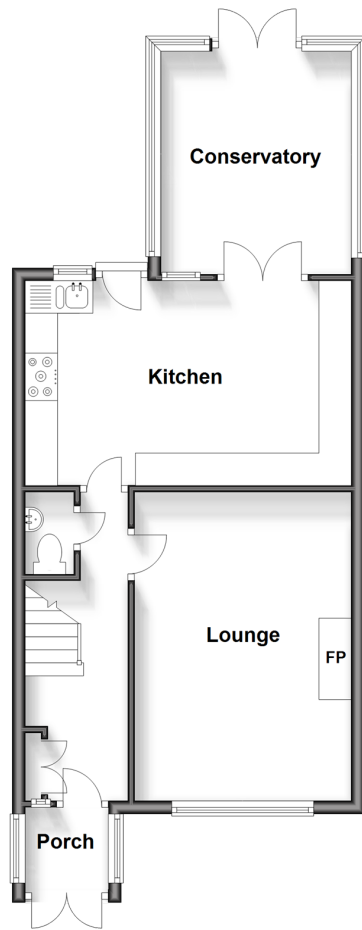
OVER 60?

Secure this property
for up to **59% less!**

Wards
Helping you move forwards

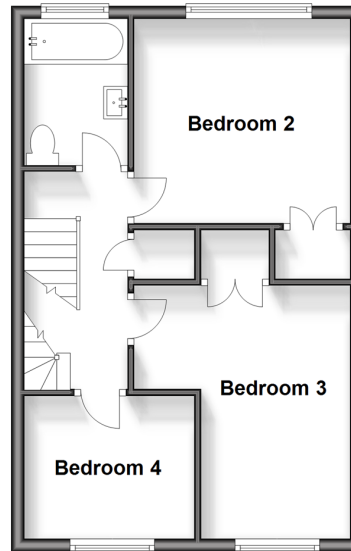
Ground Floor

Approx. 52.5 sq. metres (565.5 sq. feet)



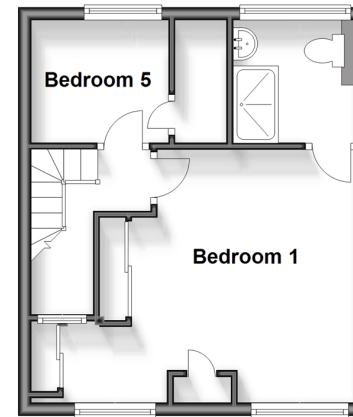
First Floor

Approx. 40.4 sq. metres (434.6 sq. feet)



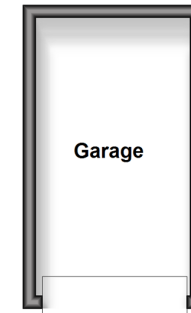
Second Floor

Approx. 29.7 sq. metres (319.9 sq. feet)



Outbuilding

Approx. 10.2 sq. metres (110.3 sq. feet)



Accommodation

GROUND FLOOR

Porch
Hallway
Cloakroom
Lounge: 14'9 x 10'9 (4.50m x 3.28m)
Kitchen: 16'6 x 10'9 (5.03m x 3.28m)
Conservatory: 11'4 x 11'0 (3.46m x 3.36m)

FIRST FLOOR

Landing
Family Bathroom
Bedroom 2: 10'8 x 9'9 (3.25m x 2.97m)
Bedroom 3: 13'5 at widest point (4.09m) x 10'8 at widest point (3.25m) narrowing to 7'6 (2.29m)
Bedroom 4: 8'7 x 7'0 (2.62m x 2.14m)

SECOND FLOOR

Landing
Bedroom 1: 18'0 at widest point x 13'0 at widest point (5.49m x 3.97m)
En-Suite Shower Room
Bedroom 5: 6'8 x 6'3 (2.03m x 1.91m)

OUTSIDE

Off-Road Parking for 2 cars
Garage
Rear Garden



Main features

- Spacious semi-detached family home in a no through road
- Detached garage and driveway for 2 cars
- Gas central heating and double glazing
- Family bathroom, cloakroom and en-suite shower room
- Rare opportunity to buy a relatively modern house within walking distance of Gillingham High Street and station

Nearest Schools

Primary Schools: Burnt Oak 0.1 miles, Skinner Street 0.4 miles, St Mary's Catholic 0.9 miles

Secondary Schools: Brompton Academy 1.1 miles, Robert Napier 1.5 miles, Chatham Grammar for Girls 1.8 miles

Transport Information

Train Stations: Gillingham 0.7 miles, Chatham 3.2 miles, Strood 3.8 miles

Address

Cornwall Road, Gillingham, Kent, ME7

Directions

For directions to this property please contact us.



Wards
Helping you move forwards

Call Gillingham Branch 01634 851191 ■ wardsofkent.co.uk



- Legal advice should be taken to verify fixtures/fittings, planning, alterations and/or lease details
- Appliances & services are untested, dimensions are approximate and floor plans are not to scale
- Through a Homewise Home For Life Plan people aged 60+ can secure this property for up to 59% less, by purchasing a Lifetime Lease.



10923591/20240904/JS/GS