



**Price**  
**£350,000**

**Freehold**

4x  1x  2x 

**Castlemaine Avenue,  
Gillingham, Kent, ME7**

**OVER 60?**

Secure this property  
for up to **59% less!**

*Wards*  
Helping you move forwards





## Main features

- **Extended family home with double bedrooms**
- **Driveway for 2 cars**
- **Loft conversion with en-suite shower room**
- **Excellent size rear garden with workshop**
- **Walking distance to Gillingham High Street and main line station**

## Accommodation

### GROUND FLOOR

Porch  
Hallway  
Lounge: 12'6 at widest point x 11'2 at widest point (3.81m x 3.41m)  
Dining Area: 11'2 x 9'10 (3.41m x 3.00m)  
Kitchen: 8'2 x 7'3 (2.49m x 2.21m)  
Conservatory: 18'4 x 8'2 (5.59m x 2.49m)

### FIRST FLOOR

Landing  
Bedroom 2: 11'10 x 10'10 (3.61m x 3.30m)  
Bedroom 3: 11'2 x 10'10 (3.41m x 3.30m)  
Bedroom 4: 7'3 x 6'7 (2.21m x 2.01m)  
Bathroom

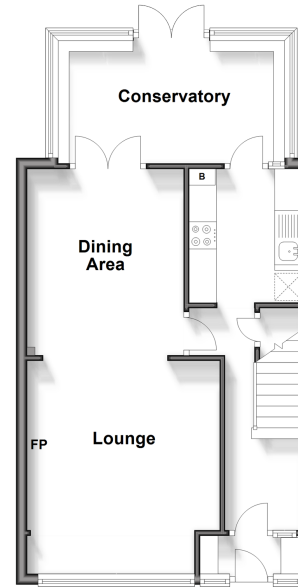
### SECOND FLOOR

Landing  
Bedroom 1: 15'9 at widest point x 15'1 at widest point (4.80m x 4.60m)  
En-Suite Shower Room

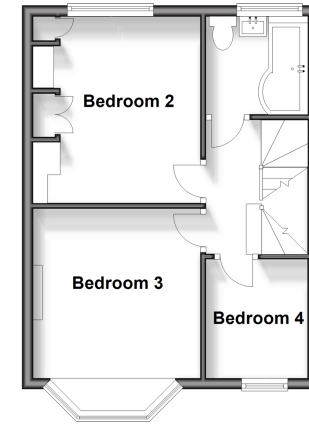
### OUTSIDE

Driveway for 2 cars  
Rear Garden

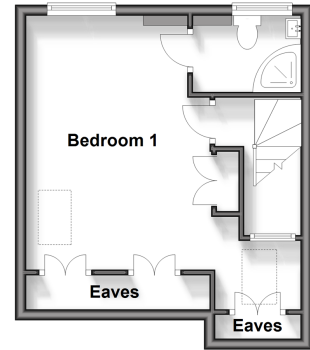
**Ground Floor**  
Approx. 47.4 sq. metres (509.7 sq. feet)



**First Floor**  
Approx. 33.9 sq. metres (364.6 sq. feet)



**Second Floor**  
Approx. 24.7 sq. metres (266.2 sq. feet)



**Call Gillingham - 01634 851191 ■ [wardsofkent.co.uk](http://wardsofkent.co.uk)**

■ Legal advice should be taken to verify fixtures/fittings, planning, alterations and/or lease details  
■ Through a Homewise Home For Life Plan people aged 60+ can secure this property for up to 59% less, by purchasing a Lifetime Lease.

■ Appliances & services are untested, dimensions are approximate and floor plans are not to scale



10917474/20240905/JS/AC