



Price
£230,000

Freehold

3x  1x  2x 

**Chaucer Road,
Gillingham, Kent, ME7**

OVER 60?

Secure this property
for up to **59% less!**

Wards
Helping you move forwards



Main features

- 2/3 bedroom Victorian terraced house ideal for the first time buyer
- Modern kitchen and bathroom
- Situated in the popular Poets Corner area of Upper Gillingham
- Close to local amenities
- Gas central heating and double glazing

Accommodation

GROUND FLOOR

Hall

Lounge: 12'7 into bay x 9'5 (3.84m x 2.87m)

Dining Room: 12'4 x 10'3 (3.76m x 3.13m)

Kitchen: 10'0 x 7'2 (3.05m x 2.19m)

Lobby

Bathroom

SPLIT LEVEL FIRST FLOOR

Landing

Bedroom 1: 12'5 x 10'2 (3.79m x 3.10m)

Bedroom 2: 12'5 x 10'4 (3.79m x 3.15m)

Bedroom 3 (off of Bedroom 2): 10'1 x 7'4 (3.08m x 2.24m)

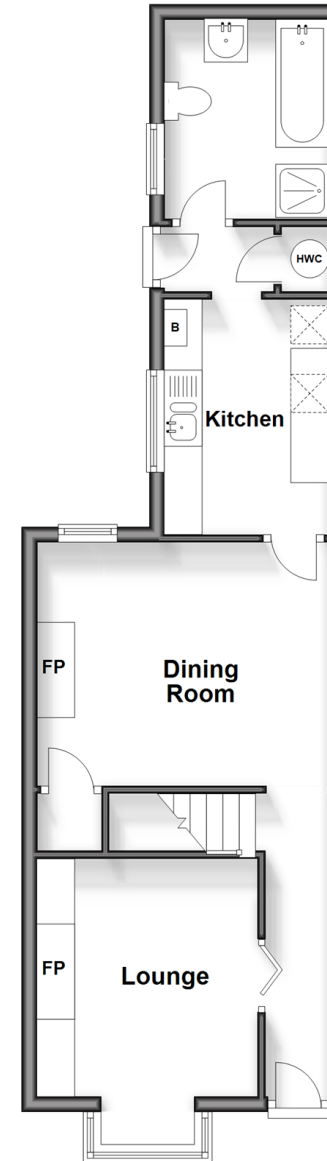
OUTSIDE

Front Garden

Rear Garden

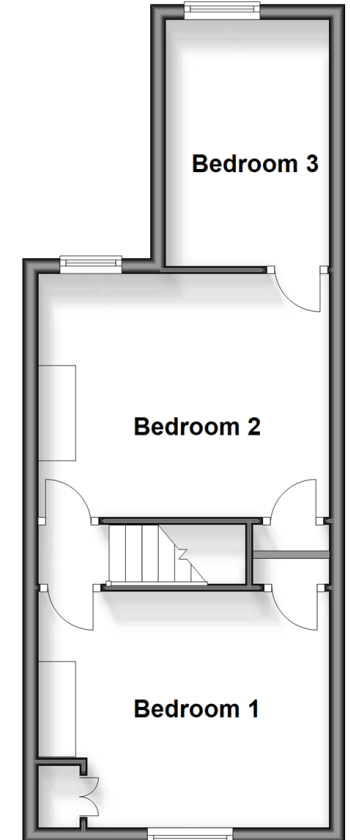
Ground Floor

Approx. 43.3 sq. metres (465.9 sq. feet)



Split Level First Floor

Approx. 35.3 sq. metres (379.5 sq. feet)



Call Gillingham - 01634 851191 ■ wardsof Kent.co.uk

- Legal advice should be taken to verify fixtures/fittings, planning, alterations and/or lease details
- Appliances & services are untested, dimensions are approximate and floor plans are not to scale
- Through a Homewise Home For Life Plan people aged 60+ can secure this property for up to 59% less, by purchasing a Lifetime Lease.



10927238/20240822/JS/GS