



Price
£300,000

Freehold

3x  1x  2x 

**Balmoral Road,
Gillingham, Kent, ME7**

OVER 60?

Secure this property
for up to **59% less!**

Wards
Helping you move forwards



Main features

- Separate bedrooms
- Offering ample living space
- Gas central heating and double glazing
- Situated within walking distance of Gillingham High Street and train station
- A great first time buy or for a young family upsizing

Accommodation

GROUND FLOOR

Entrance Hall
 Lounge: 14'7 x 10'8 (4.45m x 3.25m)
 Dining Room: 12'1 x 8'8 (3.69m x 2.64m)
 Kitchen/Breakfast Room: 19'0 x 8'5 (5.80m x 2.57m)

BASEMENT

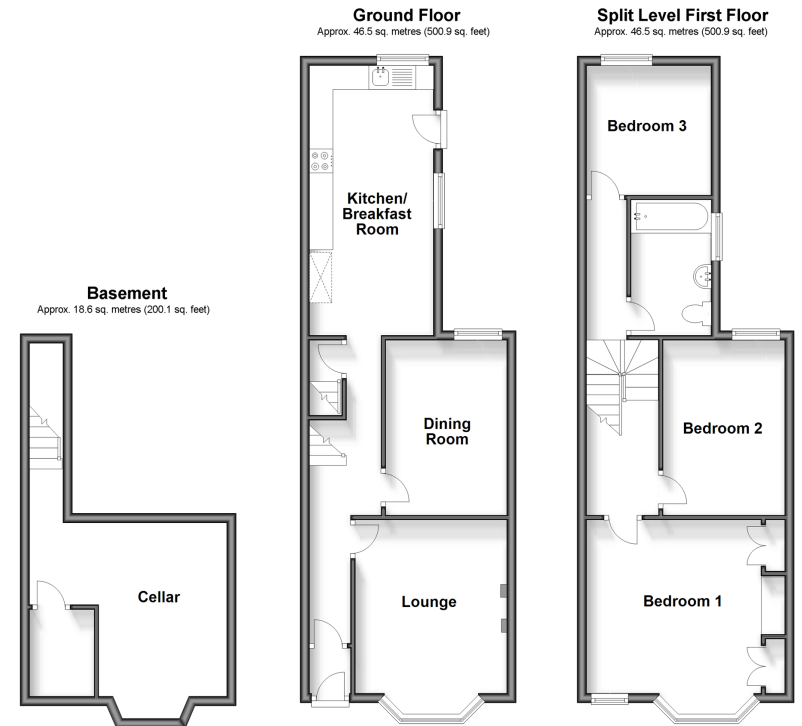
Cellar: 16'0 x 15'4 (4.88m x 4.68m)

SPLIT LEVEL FIRST FLOOR

Bedroom 1: 15'0 x 13'1 (4.58m x 3.99m)
 Bedroom 2: 11'1 x 8'8 (3.38m x 2.64m)
 Bedroom 3: 11'4 x 8'2 (3.46m x 2.49m)
 Bathroom

OUTSIDE

Front Garden
 Rear Garden



Call Gillingham - 01634 851191 ■ wardsofkent.co.uk

■ Legal advice should be taken to verify fixtures/fittings, planning, alterations and/or lease details
 ■ Through a Homewise Home For Life Plan people aged 60+ can secure this property for up to 59% less, by purchasing a Lifetime Lease.

■ Appliances & services are untested, dimensions are approximate and floor plans are not to scale



10924231/20240703/CW/AC