



Price
£240,000

Freehold

2x  1x  2x 

**Railway Street,
Gillingham, Kent, ME7**

OVER 60?

Secure this property
for up to **59% less!**

Wards
Helping you move forwards



Main features

- Well presented terraced house; ideal for the first time buyer
- Modern kitchen and bathroom
- Gas central heating and double glazing
- Useful cellar
- Situated within walking distance of Gillingham High Street and station

Accommodation

SPLIT LEVEL GROUND FLOOR

Hallway
 Dining Room: 10'6 x 10'0 (3.20m x 3.05m)
 Lounge: 13'5 x 10'5 (4.09m x 3.18m)
 Kitchen: 9'2 x 7'3 (2.80m x 2.21m)

BASEMENT

Cellar: 13'2 x 10'7 (4.02m x 3.23m)

SPLIT LEVEL FIRST FLOOR

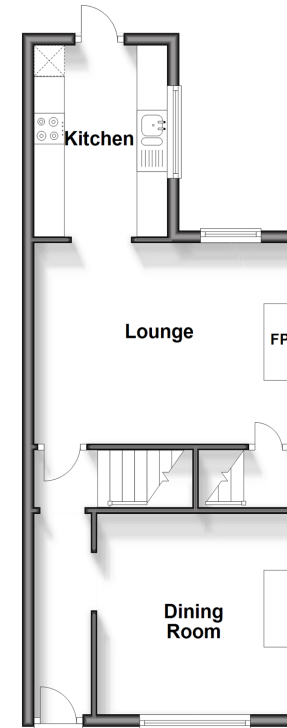
Landing
 Bedroom 1: 13'6 x 10'9 (4.12m x 3.28m)
 Bedroom 2: 10'6 x 10'4 (3.20m x 3.15m)
 Bathroom

OUTSIDE

Front Garden
 Rear Garden

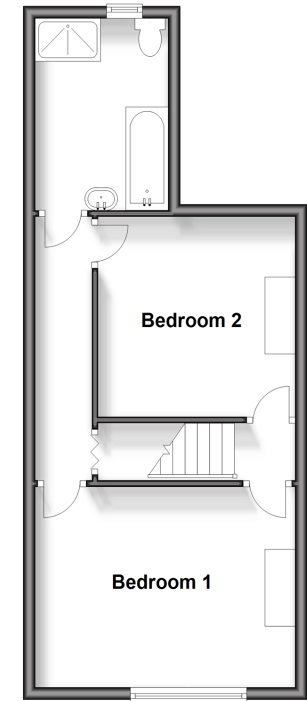
Split Level Ground Floor

Approx. 40.0 sq. metres (430.6 sq. feet)



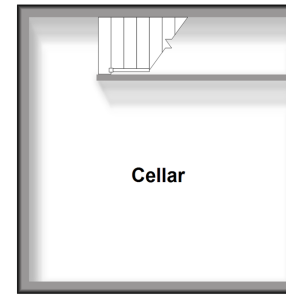
Split Level First Floor

Approx. 40.0 sq. metres (430.3 sq. feet)



Basement

Approx. 18.5 sq. metres (198.7 sq. feet)



Call Gillingham - 01634 851191 ■ wardsofkent.co.uk

■ Legal advice should be taken to verify fixtures/fittings, planning, alterations and/or lease details
 ■ Through a Homewise Home For Life Plan people aged 60+ can secure this property for up to 59% less, by purchasing a Lifetime Lease.

■ Appliances & services are untested, dimensions are approximate and floor plans are not to scale



10926241/20240617/JS/GS