



Price
£325,000

Freehold

3x  2x  2x 

**Gillingham Road,
Gillingham, Kent, ME7**

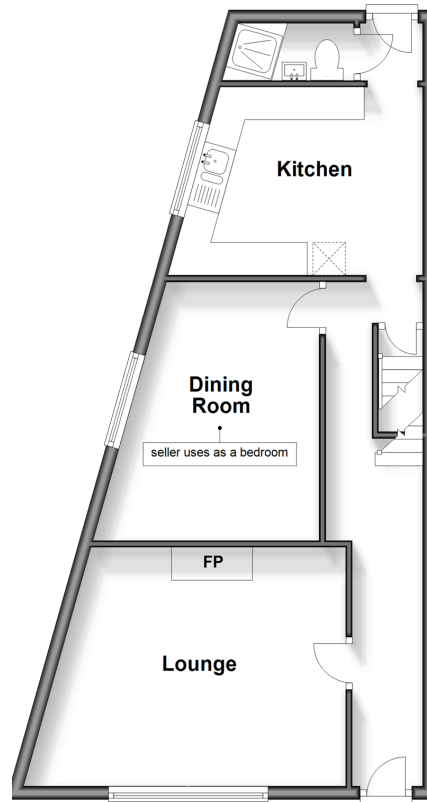
OVER 60?

Secure this property
for up to **59% less!**

Wards
Helping you move forwards

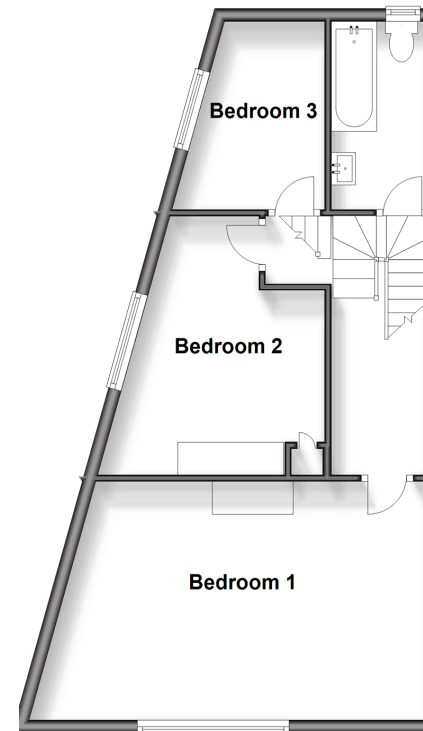
Ground Floor

Approx. 52.5 sq. metres (565.3 sq. feet)



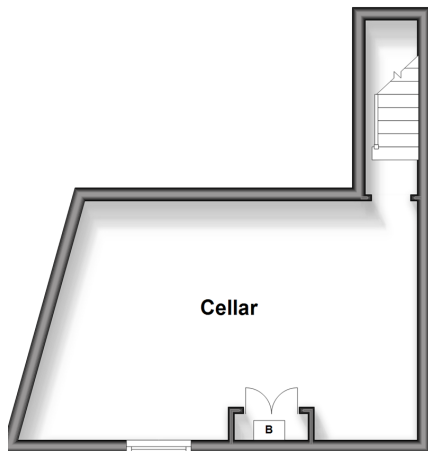
Split Level First Floor

Approx. 49.8 sq. metres (535.7 sq. feet)



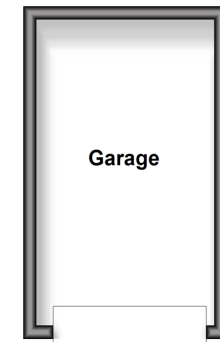
Basement

Approx. 22.8 sq. metres (245.8 sq. feet)



Outbuilding

Approx. 12.9 sq. metres (138.8 sq. feet)



Accommodation

GROUND FLOOR

Hallway

Lounge: 15'1 at widest point x 12'0 at widest point (4.60m x 3.66m)

Dining Room(used as a bedroom): 13'4 at widest point x 8'1 at widest point (4.07m x 2.47m)

Kitchen: 11'4 at widest point x 9'4 at widest point (3.46m x 2.85m)

Lobby

Shower Room

BASEMENT

Cellar: 18'5 at widest point x 12'4 at widest point (5.62m x 3.76m)

SPLIT LEVEL FIRST FLOOR

Landing

Bedroom 1: 18'4 at widest point x 11'8 at widest point (5.59m x 3.56m)

Bedroom 2: 13'3 at widest point x 9'1 at widest point (4.04m x 2.77m)

Bedroom 3: 9'3 at widest point x 6'0 at widest point (2.82m x 1.83m)

OUTSIDE

Front Garden

Rear Garden

Garage & Driveway to rear



Main features

- Extremely spacious end of terrace house with additional cellar
- Downstairs shower room and upstairs bathroom
- Provides the rare benefit of a garage and driveway for additional parking
- Gas central heating and double glazing
- In walking distance of Gillingham High Street and station



Nearest Schools

Primary: Napier Community Primary and Nursery School 0.2 miles, Byron 0.3 miles, Barnsole Juniors 0.4 miles

Secondary: Brompton Academy 0.3 miles, Chatham Grammar for Girls 0.6 miles, Robert Napier 0.6 miles



Transport Information

Train Stations: Gillingham 0.3 miles, Chatham 1.2 miles, Rochester 1.6 miles



Address

Gillingham Road, Gillingham, Kent, ME7



Directions

For directions to this property please contact us.



Wards
Helping you move forwards

Call Gillingham Branch 01634 851191 ■ wardsofkent.co.uk



■ Legal advice should be taken to verify fixtures/fittings, planning, alterations and/or lease details ■ Appliances & services are untested, dimensions are approximate and floor plans are not to scale
■ Through a Homewise Home For Life Plan people aged 60+ can secure this property for up to 59% less, by purchasing a Lifetime Lease.

EPC RATING
CURRENT: E(53) POTENTIAL: C(75)

10924496/20240608/JS/GS