



Price
£375,000

Freehold

4x  1x  1x 

**Holmside, Gillingham,
Kent, ME7**

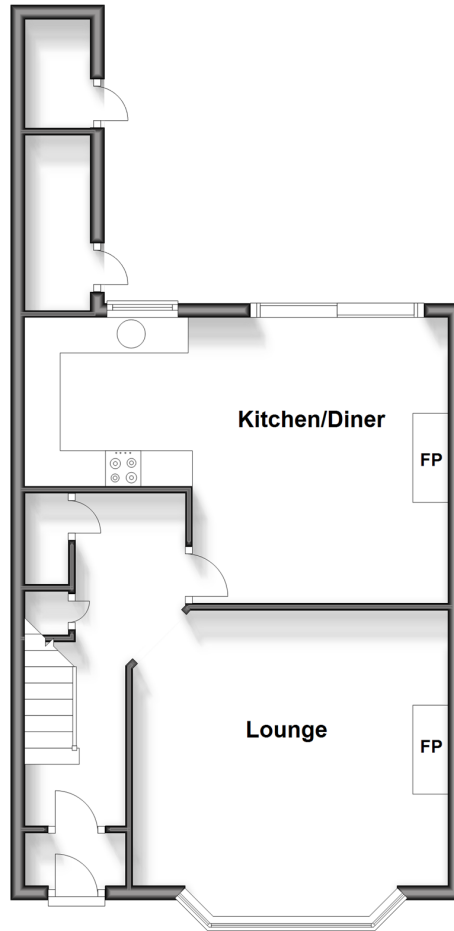
OVER 60?

Secure this property
for up to **59% less!**

Wards
Helping you move forwards

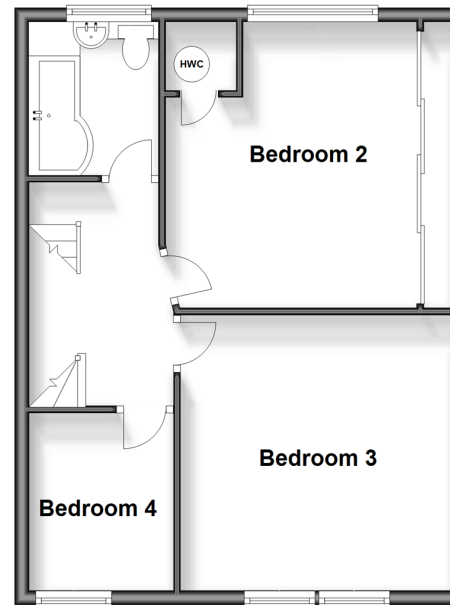
Ground Floor

Approx. 52.1 sq. metres (560.6 sq. feet)



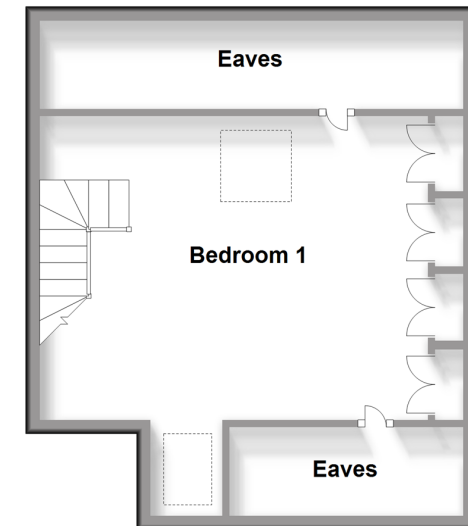
First Floor

Approx. 47.7 sq. metres (513.9 sq. feet)



Second Floor

Approx. 39.4 sq. metres (424.5 sq. feet)



Accommodation

GROUND FLOOR

Porch

Hallway

Lounge: 15'0 into bay x 14'6 (4.58m x 4.42m)

Kitchen/Diner: (L-shaped) 13'3 x 12'6 (4.04m x 3.81m) plus 7'6 x 7'4 (2.29m x 2.24m)

FIRST FLOOR

Landing

Bathroom

Bedroom 2: 13'3 x 13'2 (4.04m x 4.02m)

Bedroom 3: 13'3 x 12'8 (4.04m x 3.86m)

Bedroom 4: 8'2 x 6'9 (2.49m x 2.06m)

SECOND FLOOR

Bedroom 1: 14'8 x 13'8 up to recess (4.47m x 4.17m)

OUTSIDE

Front Garden

Rear Garden



Main features

- Spacious Edwardian terraced house in a conservation area
- Character family home overlooking a pleasant wooded green
- Modern fitted kitchen and bathroom
- Popular Upper Gillingham location
- Gas central heating and double glazing



Nearest Schools

Primary: Byron 0.5 miles, Barnsole Juniors 0.5 miles, Napier Community Primary and Nursery School 0.5 miles

Secondary: Robert Napier 0.3 miles, Chatham Grammar for Girls 0.4 miles, Brompton Academy 1.0 miles



Transport Information

Train Stations: Gillingham 1.5 miles, Chatham 2.4 miles, Rochester 2.5 miles



Address

Holmside, Gillingham, Kent, ME7



Directions

For directions to this property please contact us.



Wards
Helping you move forwards

Call Gillingham Branch 01634 851191 ■ wardsofkent.co.uk



■ Legal advice should be taken to verify fixtures/fittings, planning, alterations and/or lease details ■ Appliances & services are untested, dimensions are approximate and floor plans are not to scale
■ Through a Homewise Home For Life Plan people aged 60+ can secure this property for up to 59% less, by purchasing a Lifetime Lease.

EPC RATING	CURRENT:	POTENTIAL:

10927243/20240513/JS/GS