



Price  
**£325,000**

**Freehold**

3x  2x  1x 

**Waterside Lane,  
Gillingham, Kent, ME7**

**OVER 60?**

Secure this property  
for up to **59% less!**

*Wards*  
Helping you move forwards





## Main features

- Beautifully refurbished , chain free character semi-detached house
- Allocated parking
- Downstairs shower room and upstairs bathroom
- Gas central heating and double glazing
- Riverside location with stunning panoramic views

## Accommodation

### GROUND FLOOR

Porch

Bedroom 3: 14'9 x 7'0 (4.50m x 2.14m)

Lounge: 14'3 at widest point x 10'9 at widest point (4.35m x 3.28m)

Kitchen/Diner: (L-shaped) 15'9 x 11'3 (4.80m x 3.43m) plus 6'8 x 13'8 (2.03m x 4.17m)

Shower Room

### SPLIT LEVEL FIRST FLOOR

Landing

Bedroom 1: 12'2 at widest point x 11'0 at widest point (3.71m x 3.36m)

Bathroom

Bedroom 2: 9'0 at widest point x 7'2 at widest point (2.75m x 2.19m)

### OUTSIDE

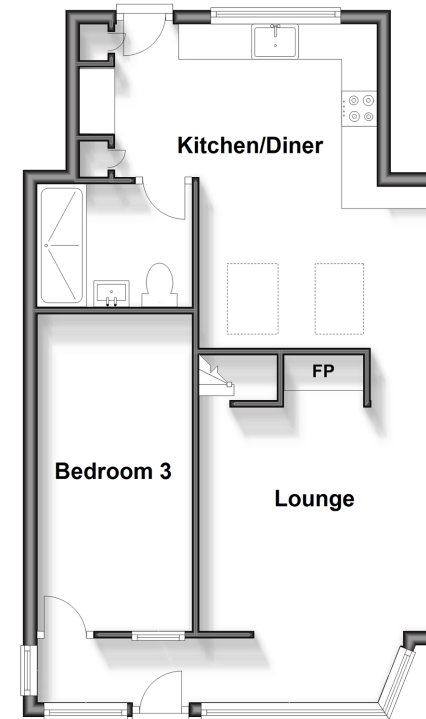
Front Garden

Rear Garden

Off-Road Parking to rear

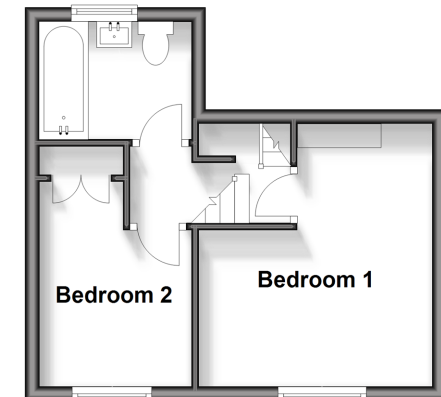
### Ground Floor

Approx. 50.2 sq. metres (540.1 sq. feet)



### Split Level First Floor

Approx. 24.0 sq. metres (258.6 sq. feet)



Call Gillingham - 01634 851191 ■ [wardsofkent.co.uk](http://wardsofkent.co.uk)

- Legal advice should be taken to verify fixtures/fittings, planning, alterations and/or lease details
- Appliances & services are untested, dimensions are approximate and floor plans are not to scale
- Through a Homewise Home For Life Plan people aged 60+ can secure this property for up to 59% less, by purchasing a Lifetime Lease.



10917200/20241001/BF/GS