



Price
£230,000

Leasehold

2x  1x  1x 

**The Boardwalk, Pearl
Lane, Gillingham, Kent,
ME7**

OVER 60?

Secure this property
for up to **59% less!**

Wards
Helping you move forwards



Main features

- Spacious, well presented top floor flat situated on a waterside development
- Balcony with river views
- Resident's parking
- Use of gym included in the service charge
- Lovely landscaped surroundings on the outskirts of Gillingham

Accommodation

TOP FLOOR

Entrance Hall

Bathroom

Bedroom 1: 11'8 x 10'3 (3.56m x 3.13m)

Kitchen/Living Area: 18'8 x 11'5 (5.69m x 3.48m)

Balcony

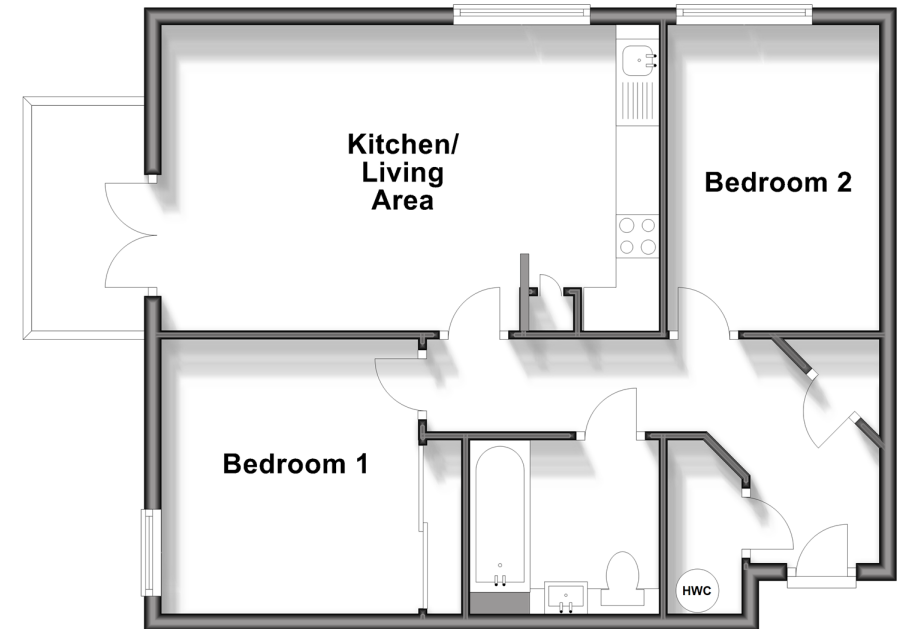
Bedroom 2: 11'5 x 7'9 (3.48m x 2.36m)

OUTSIDE

Resident's Parking

Top Floor

Approx. 55.7 sq. metres (599.6 sq. feet)



Call Gillingham - 01634 851191 ■ wardsofkent.co.uk

- Legal advice should be taken to verify fixtures/fittings, planning, alterations and/or lease details
- Appliances & services are untested, dimensions are approximate and floor plans are not to scale
- Through a Homewise Home For Life Plan people aged 60+ can secure this property for up to 59% less, by purchasing a Lifetime Lease.



10927229/20240508/JS/GS