



**Price**  
**£350,000**

**Freehold**

4x  1x  1x 

**Castlemaine Avenue,  
Gillingham, Kent, ME7**

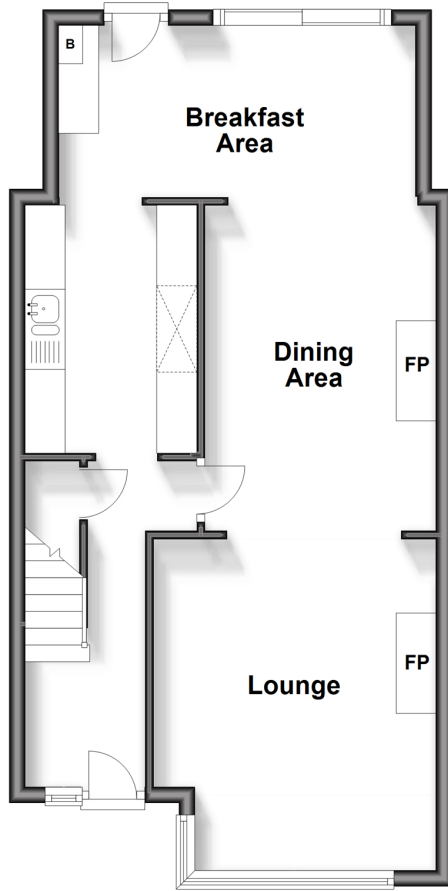
**OVER 60?**

Secure this property  
for up to **59% less!**

*Wards*  
Helping you move forwards

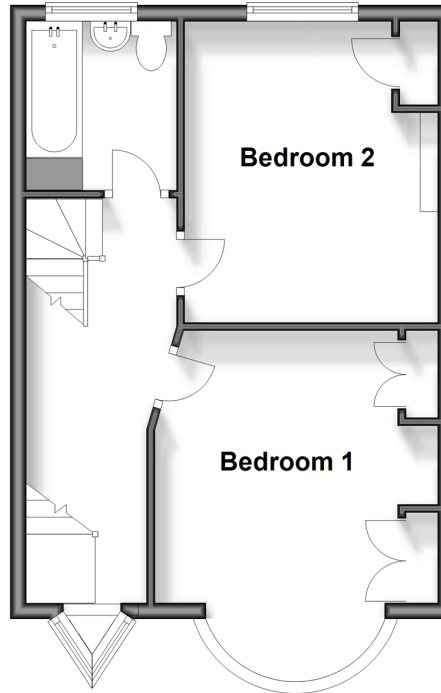
## Ground Floor

Approx. 50.4 sq. metres (542.7 sq. feet)



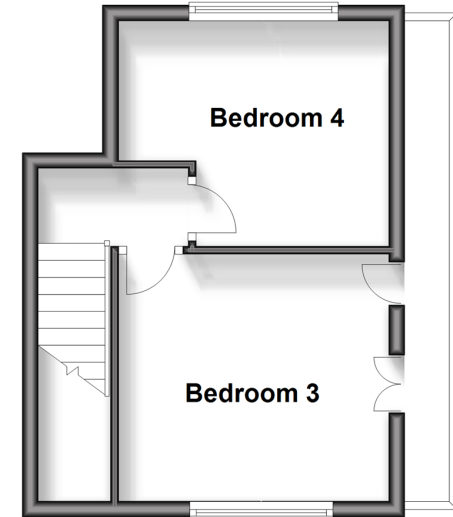
## First Floor

Approx. 38.1 sq. metres (410.2 sq. feet)



## Second Floor

Approx. 24.4 sq. metres (262.9 sq. feet)



## Accommodation

### GROUND FLOOR

Entrance Hall

Kitchen: 8'1 x 7'1 (2.47m x 2.16m)

Breakfast Area: 15'5 x 8'7 (4.70m x 2.62m)

Dining Area: 14'11 x 9'7 (4.55m x 2.92m)

Lounge: 14'4 into bay x 11'7 (4.37m x 3.53m)

### FIRST FLOOR

Landing

Bedroom 1: 13'7 into bay x 10'7 (4.14m x 3.23m)

Bedroom 2: 11'1 x 10'5 (3.38m x 3.18m)

Bathroom

### SECOND FLOOR

Landing

Bedroom 3: 11'2 x 9'9 (3.41m x 2.97m)

Bedroom 4: 11'0 at widest point (3.36m) narrowing to 8'0 (2.44m) x 9'1 at widest point (2.77m)

### OUTSIDE

Front Garden

Rear Garden

Workshop/Garden Room: 16'0 x 8'0 (4.88m x 2.44m)



## Main features

- Extended 1930's terraced house with double bedrooms
- Spacious family accommodation with loft conversion and ground floor extension
- Large useful workshop/garden room
- Gas central heating and double glazing
- Potential for off-road parking (subject to planning permission)



### Nearest Schools

Primary: Saxon Way 0.3 miles, St Mary's Catholic 0.5 miles, Napier Community Primary and Nursery School 0.9 miles  
Secondary: Robert Napier 1.2 miles, Brompton Academy 1.7 miles, Chatham Grammar School for Girls 1.7 miles



### Transport Information

Train Stations: Gillingham 0.7 miles, Rainham 3.7 miles, Chatham 3.9 miles



### Address

Castlemaine Avenue, Gillingham, Kent, ME7



### Directions

For directions to this property please contact us.



**Wards**  
Helping you move forwards

Call Gillingham Branch 01634 851191 ■ [wardsofkent.co.uk](http://wardsofkent.co.uk)



- Legal advice should be taken to verify fixtures/fittings, planning, alterations and/or lease details
- Appliances & services are untested, dimensions are approximate and floor plans are not to scale
- Through a Homewise Home For Life Plan people aged 60+ can secure this property for up to 59% less, by purchasing a Lifetime Lease.



10926918/20240404/AC/GS