

OVER 60?

Secure this property
for up to **59% less!**



Price

£375,000

Freehold

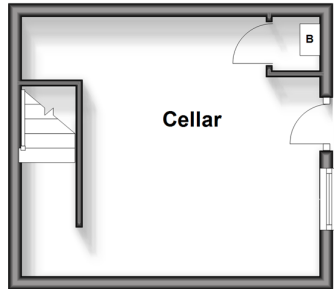
3x  1x  1x 

Grange Road, Gillingham, Kent, ME7

Wards
Helping you move forwards

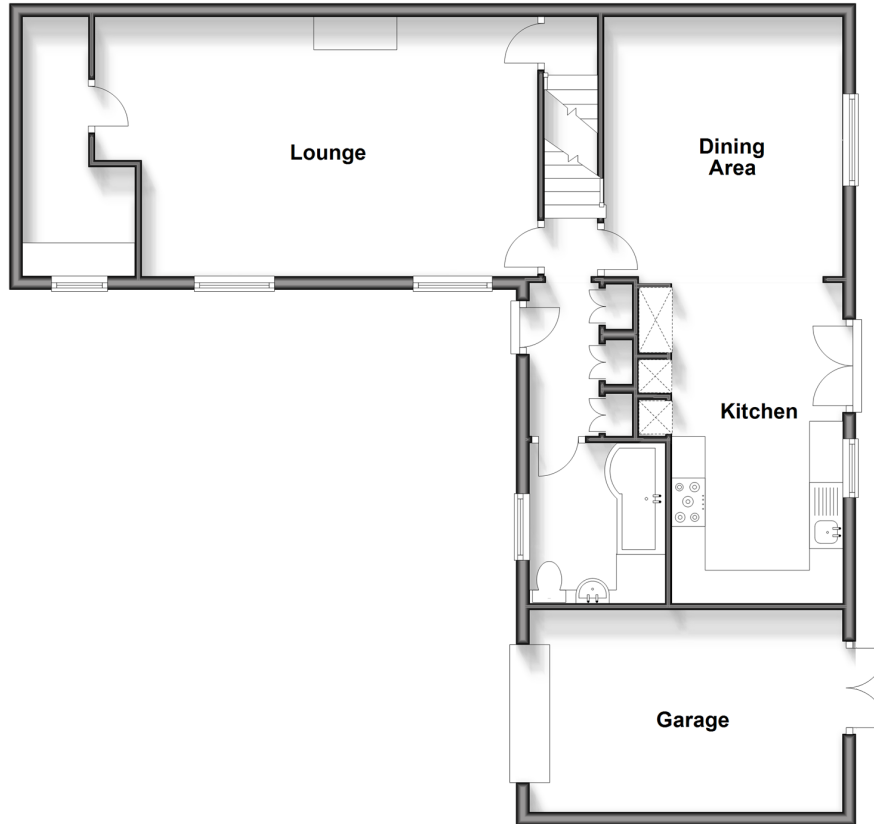
Basement

Approx. 17.6 sq. metres (189.0 sq. feet)



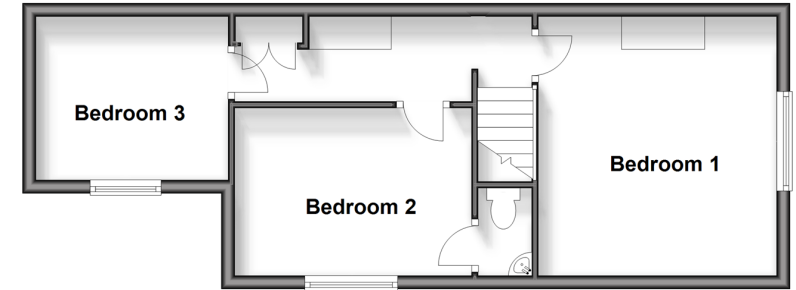
Ground Floor

Approx. 86.4 sq. metres (929.5 sq. feet)



First Floor

Approx. 39.3 sq. metres (422.8 sq. feet)



Accommodation

GROUND FLOOR

Hallway
Lounge: 21'1 x 13'5 (6.43m x 4.09m)
Utility Room: 13'0 x 6'7 (3.97m x 2.01m)
Dining Area: 12'10 x 11'5 (3.91m x 3.48m)
Kitchen: 16'9 x 11'5 (5.11m x 3.48m)
Bathroom

BASEMENT

Cellar: 12'3 x 11'2 (3.74m x 3.41m)

FIRST FLOOR

Landing
Bedroom 1: 12'1 x 11'9 (3.69m x 3.58m)
Bedroom 2: 18'8 x 11'6 (5.69m x 3.51m)
En-Suite Cloakroom
Bedroom 3: 10'1 x 7'3 (3.08m x 2.21m)

OUTSIDE

Driveway
Garage
Rear Garden



Main features

- Immaculately presented semi-detached home
- Plenty of dining space - great for families
- Large private rear garden
- Located on a private road with driveway for multiple vehicles
- Uniquely laid out home, one of a kind in its area



Nearest Schools

Primary Schools: Saxon Way Primary 0.5 miles, St Mary's Catholic Primary 0.7 miles, Woodlands Primary 0.8 miles

Secondary Schools: The Robert Napier School 1.2 miles, Brompton Academy 1.8 miles, Chatham Grammar School



Transport Information

Train Stations: Gillingham 0.7 miles, Chatham 2.2 miles, Rainham 2.5 miles



Address

Grange Road, Gillingham, Kent, ME7



Directions

For directions to this property please contact us.



Call Gillingham Branch 01634 851191 ■ wardsofkent.co.uk



■ Legal advice should be taken to verify fixtures/fittings, planning, alterations and/or lease details ■ Appliances & services are untested, dimensions are approximate and floor plans are not to scale
 ■ Through a Homewise Home For Life Plan people aged 60+ can secure this property for up to 59% less, by purchasing a Lifetime Lease.



10927144/20240124/JS/AC