



**Price**  
**£250,000**

**Freehold**

3x  1x  1x 

**Napier Road,  
Gillingham, Kent, ME7**

**OVER 60?**

Secure this property  
for up to **59% less!**

*Wards*  
Helping you move forwards





## Main features

- Victorian terraced house with separate bedrooms and upstairs bathroom
- Additional cellar
- Spacious family home requiring some updating and improvements
- Off-road parking
- Rear garden over 250 foot
- Chain free

## Accommodation

### GROUND FLOOR

#### PORCH

Lounge/Diner: 27'2 x 12'1 (8.29m x 3.69m)

Kitchen/Breakfast Room: 22'9 x 6'6 (6.94m x 1.98m)

### BASEMENT

Cellar

### SPLIT LEVEL FIRST FLOOR

Landing

Bedroom 1: 13'4 x 12'0 (4.07m x 3.66m)

Bedroom 2: 10'6 x 7'11 (3.20m x 2.41m)

Bathroom

Bedroom 3: 11'1 x 6'7 (3.38m x 2.01m)

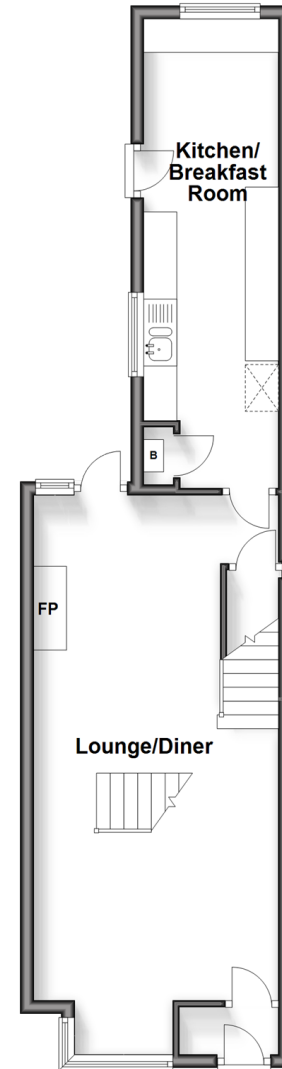
### OUTSIDE

Off-Road Parking

Rear Garden

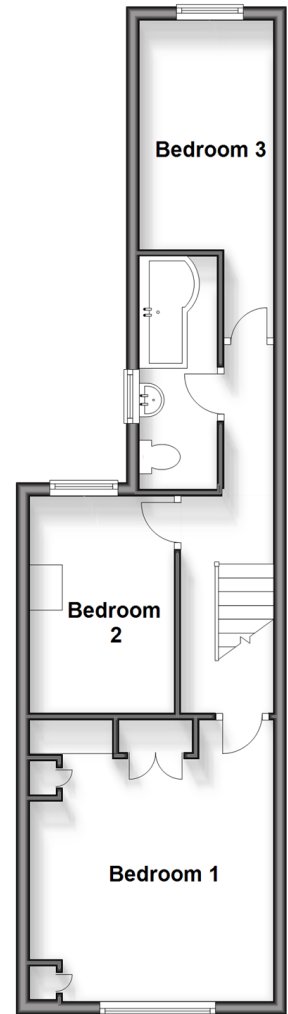
### Ground Floor

Approx. 44.9 sq. metres (483.1 sq. feet)



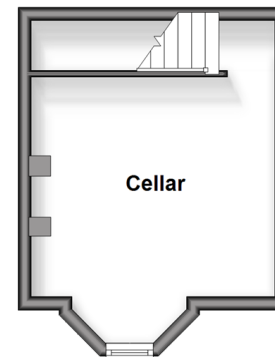
### Split Level First Floor

Approx. 42.4 sq. metres (456.2 sq. feet)



### Basement

Approx. 16.2 sq. metres (174.4 sq. feet)



**Call Gillingham - 01634 851191 ■ [wardsofkent.co.uk](http://wardsofkent.co.uk)**

- Legal advice should be taken to verify fixtures/fittings, planning, alterations and/or lease details
- Appliances & services are untested, dimensions are approximate and floor plans are not to scale
- Through a Homewise Home For Life Plan people aged 60+ can secure this property for up to 59% less, by purchasing a Lifetime Lease.



10927146/20240419/AC/GS