



**Price**  
**£270,000**

**Freehold**

3x  1x  1x 

**Gillingham Green,  
Gillingham, Kent, ME7**

*Wards*  
Helping you move forwards





## Main features

- Terraced house with separate bedrooms and situated in a cul-de-sac position
- Some updating and modernisation required
- Gas central heating and double glazing
- Off-road parking for 2 cars
- Good sized rear garden

## Accommodation

### GROUND FLOOR

Porch  
Hallway  
Lounge: 15'6 x 11'6 (4.73m x 3.51m)  
Bathroom  
Kitchen: 11'5 x 11'2 (3.48m x 3.41m)  
Conservatory: 12'7 x 5'7 (3.84m x 1.70m)

### FIRST FLOOR

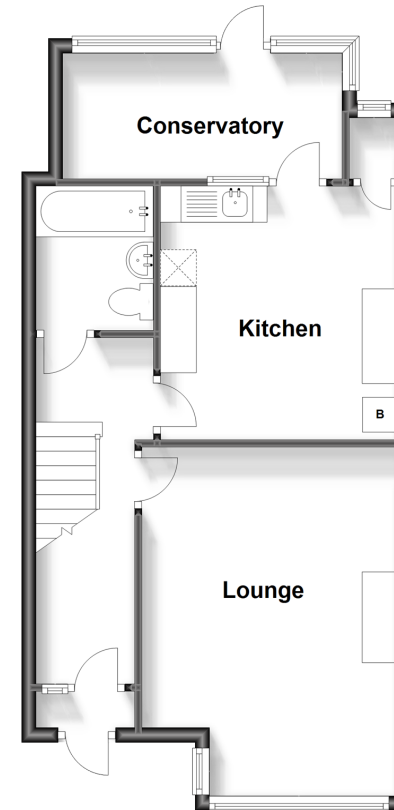
Landing  
Bedroom 1: 14'1 x 11'4 (4.30m x 3.46m)  
Bedroom 2: 12'9 x 9'4 (3.89m x 2.85m)  
Bedroom 3: 10'4 x 7'5 (3.15m x 2.26m)

### OUTSIDE

Off-Road Parking for 2 cars  
Rear Garden

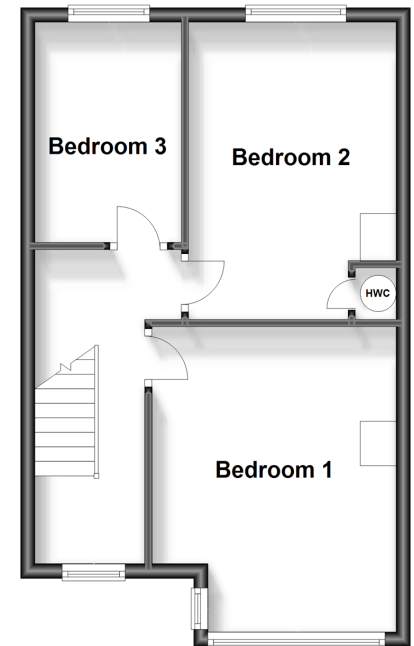
### Ground Floor

Approx. 48.0 sq. metres (517.0 sq. feet)



### First Floor

Approx. 40.1 sq. metres (432.2 sq. feet)



**Call Gillingham - 01634 851191 ■ [wardsokent.co.uk](http://wardsokent.co.uk)**

- Legal advice should be taken to verify fixtures/fittings, planning, alterations and/or lease details
- Appliances & services are untested, dimensions are approximate and floor plans are not to scale



10927066/20231005/JS/GS