



OVER 60?

Secure this property
for up to **59% less!**

Price

£450,000

Freehold

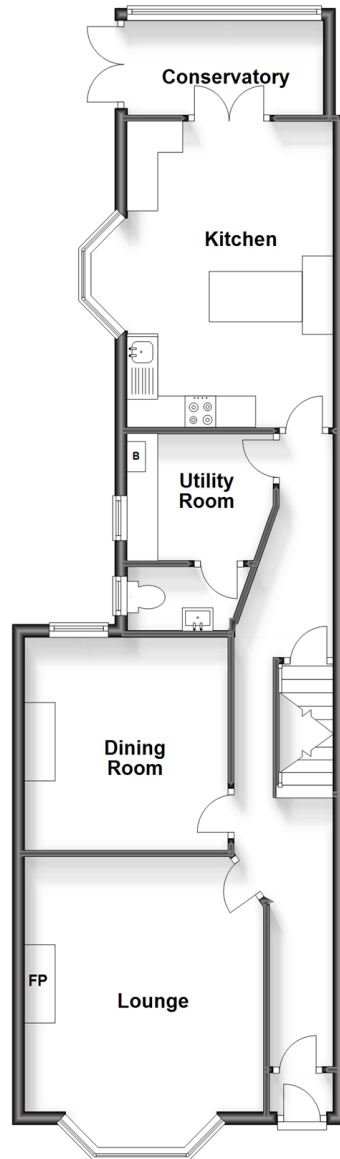
4x  2x  2x 

**Park Avenue,
Gillingham, Kent, ME7**

Wards
Helping you move forwards

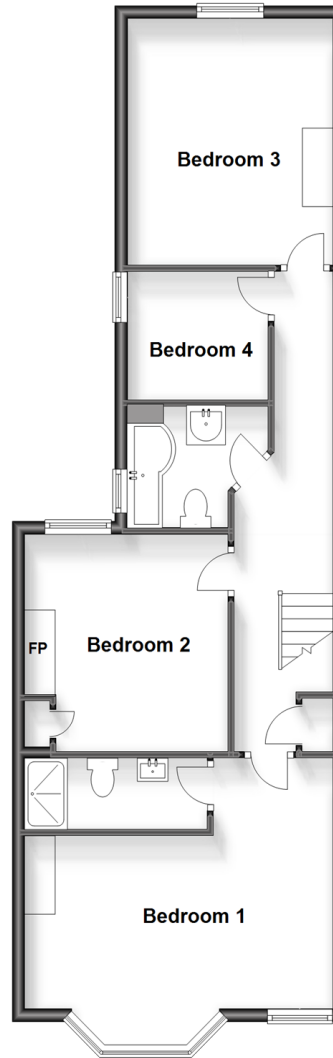
Ground Floor

Approx. 71.4 sq. metres (768.9 sq. feet)



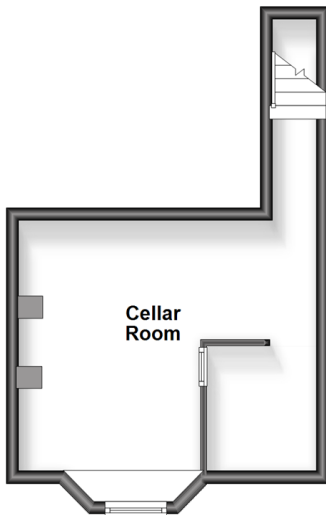
First Floor

Approx. 66.1 sq. metres (711.3 sq. feet)



Basement

Approx. 22.6 sq. metres (243.5 sq. feet)



Accommodation

GROUND FLOOR

Porch

Entrance Hall

Lounge: 15'7 into bay x 13'0 (4.75m x 3.97m)

Dining Room: 11'4 x 11'4 (3.46m x 3.46m)

Utility Room: 7'8 x 6'6 (2.34m x 1.98m)

Cloakroom

Kitchen: 15'9 x 13'7 into bay (4.80m x 4.14m)

Conservatory: 11'4 x 4'9 (3.46m x 1.45m)

BASEMENT

Cellar Room: 16'8 at widest point x 13'0 at widest point (5.08m x 3.97m)

FIRST FLOOR

Landing

Bedroom 1: 16'8 at widest point x 15'8 maximum (5.08m x 4.78m)

En-Suite Shower Room

Bedroom 2: 11'2 x 11'1 (3.41m x 3.38m)

Bedroom 3: 12'10 x 11'5 (3.91m x 3.48m)

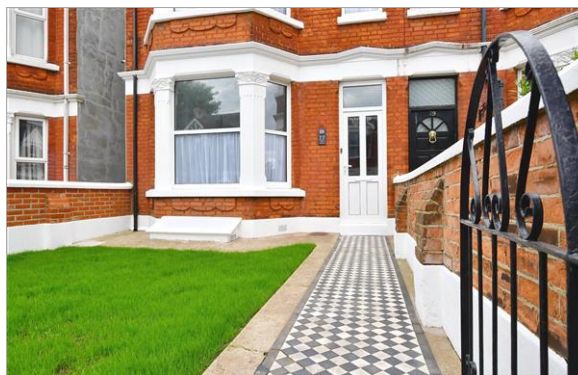
Bedroom 4: 7'9 x 6'6 (2.36m x 1.98m)

Bathroom

OUTSIDE

Front Garden

Rear Garden



Main features

- Edwardian semi-detached house situated on one of the most sought-after roads in Gillingham
- Family bathroom, en-suite shower room & cloakroom
- Beautiful fitted kitchen & utility room
- Additional cellar room
- Stunning family home refurbished to a high standard with many original features
- Located close to Gillingham Park



Nearest Schools

Primary Schools: Byron Primary 0.3 miles, Napier Community Primary and Nursery School 0.5 miles

Secondary Schools: Chatham Grammar for Girls 0.3 miles, Robert Napier 0.3 miles, Brompton Academy 0.8 miles



Transport Information

Train Stations: Gillingham 0.9 miles, Chatham 1.5 miles, Rochester 2.0 miles



Address

Park Avenue, Gillingham, Kent, ME7



Directions

For directions to this property please contact us.



Wards
Helping you move forwards

Call Gillingham Branch 01634 851191 ■ wardsofkent.co.uk



- Legal advice should be taken to verify fixtures/fittings, planning, alterations and/or lease details
- Appliances & services are untested, dimensions are approximate and floor plans are not to scale
- Through a Homewise Home For Life Plan people aged 60+ can secure this property for up to 59% less, by purchasing a Lifetime Lease.



10926825/20230518/JS/GS