



Guide Price
£350,000

Freehold

3x  1x  1x 

**Oxenden Road,
Folkestone, Kent, CT20**

OVER 60?

Secure this property
for up to **59% less!**

Wards
Helping you move forwards



Main features

- **Spacious and bright interior**
- **Wrap around garden**
- **Driveway and garage**
- **Close to Folkestone West & Folkestone Central stations**
- **Fantastic opportunity for someone to make it their own**

Accommodation

GROUND FLOOR

Entrance Hall

Kitchen: 15'3 x 9'4 (4.65m x 2.85m)

Lounge: 22'3 x 15'3 (6.79m x 4.65m)

FIRST FLOOR

Landing

Bedroom 1: 9'3 x 6'9 (2.82m x 2.06m)

Bedroom 2: 11'9 x 9'2 (3.58m x 2.80m)

Bedroom 3: 15'3 x 9'4 (4.65m x 2.85m)

Shower Room

Separate Toilet

OUTSIDE

Garage

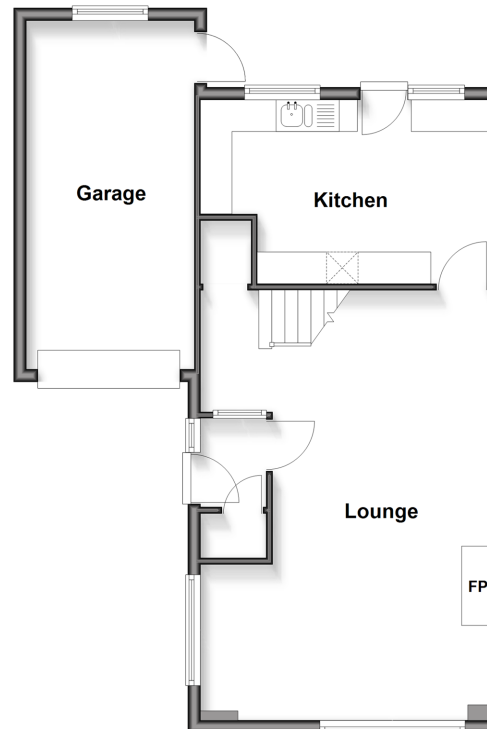
Driveway

Front Garden

Rear Garden

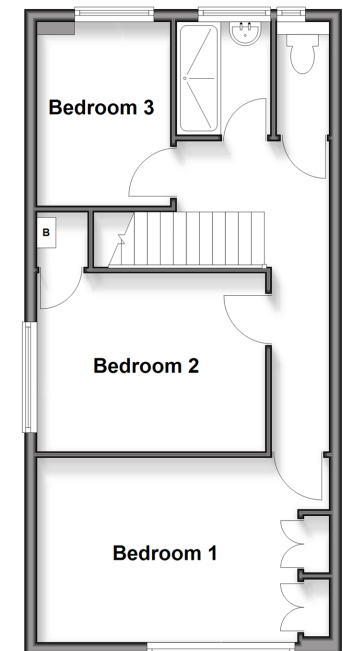
Ground Floor

Approx. 60.5 sq. metres (651.0 sq. feet)



First Floor

Approx. 45.4 sq. metres (488.9 sq. feet)



Call Folkestone - 01303 256505 ■ wardsfolkent.co.uk

- Legal advice should be taken to verify fixtures/fittings, planning, alterations and/or lease details
- Through a Homewise Home For Life Plan people aged 60+ can secure this property for up to 50% less, by purchasing a Lifetime Lease.

- Appliances & services are untested, dimensions are approximate and floor plans are not to scale



12638479/20251120/LS/LS1