



Price
£375,000

Freehold

3x  2x  1x 

**Westbrook Drive,
Folkestone, Kent, CT20**

OVER 60?

Secure this property
for up to **59% less!**

Wards
Helping you move forwards



Main features

- **Three bedroom semi-detached townhouse**
- **Main bedroom with en-suite on the top floor**
- **Spacious rooms throughout**
- **Bright kitchen with bay window**
- **Private driveway**
- **Well maintained rear garden**
- **Summer house converted into a gym**
- **Short walk to Folkestone Central Station**

Accommodation

GROUND FLOOR

Hallway
Lounge: 14'4 x 12'6 (4.37m x 3.81m)
Kitchen: 14'4 x 9'9 (4.37m x 2.97m)
Downstairs Cloakroom

FIRST FLOOR

Landing
Bedroom 2: 14'3 x 9'9 (4.35m x 2.97m)
Bedroom 3: 14'5 x 10'10 (4.40m x 3.30m)
Bathroom

SECOND FLOOR

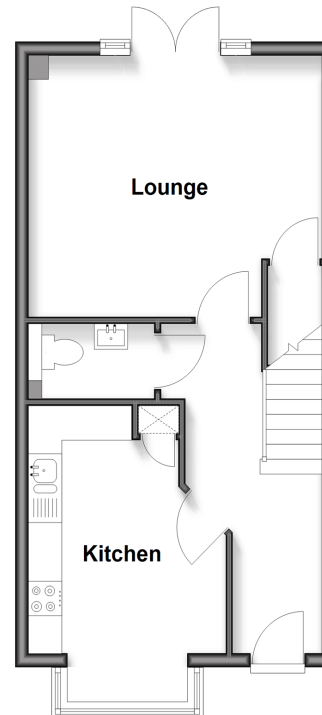
Landing
Bedroom 1: 14'4 x 13'10 (4.37m x 4.22m)
En-suite: 7'3 x 5'4 (2.21m x 1.63m)

OUTSIDE

Off Road Parking
Rear Garden

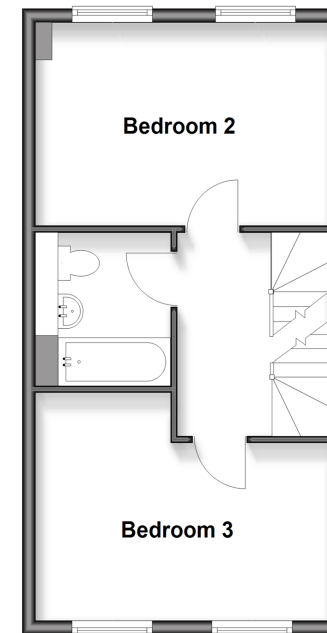
Ground Floor

Approx. 38.8 sq. metres (417.4 sq. feet)



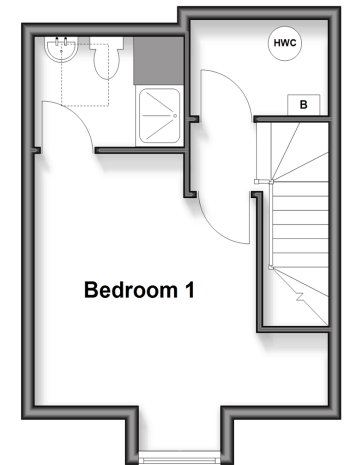
First Floor

Approx. 38.2 sq. metres (410.7 sq. feet)



Second Floor

Approx. 24.9 sq. metres (267.6 sq. feet)



Call Folkestone - 01303 256505 ■ wardsfolkent.co.uk

■ Legal advice should be taken to verify fixtures/fittings, planning, alterations and/or lease details
■ Through a Homewise Home For Life Plan people aged 60+ can secure this property for up to 59% less, by purchasing a Lifetime Lease.

■ Appliances & services are untested, dimensions are approximate and floor plans are not to scale



12638423/20250723/LS1/LS1