



OVER 60?

Secure this property
for up to **59% less!**

Price

£700,000

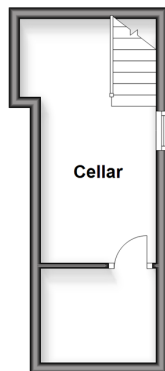
Freehold

6x  2x  2x 

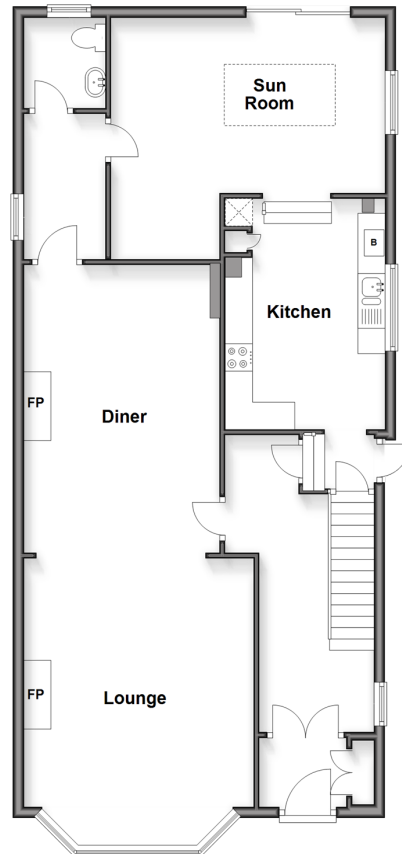
**Kingsnorth Gardens,
Folkestone, Kent, CT20**

Wards
Helping you move forwards

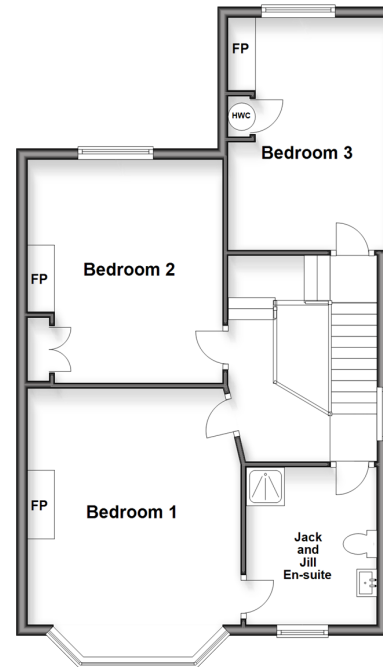
Basement
Approx. 13.8 sq. metres (148.0 sq. feet)



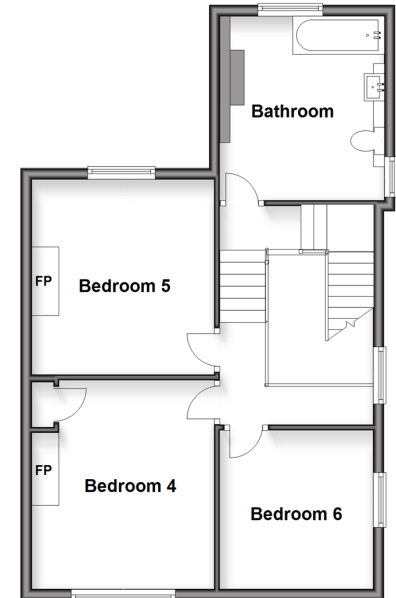
Split Level Ground Floor
Approx. 94.4 sq. metres (1015.8 sq. feet)



Split Level First Floor
Approx. 62.9 sq. metres (676.9 sq. feet)



Split Level Second Floor
Approx. 55.8 sq. metres (600.2 sq. feet)



Accommodation

BASEMENT

Cellar

SPLIT LEVEL GROUND FLOOR

Entrance Hall
Hallway
Lounge: 17'0 x 13'1 (5.19m x 3.99m)
Diner: 18'1 x 11'10 (5.52m x 3.61m)
Kitchen: 14'0 x 8'10 (4.27m x 2.69m)
Sun Room (Extension): 15'10 x 14'1 (4.83m x 4.30m)
Utility Area
Downstairs Toilet

SPLIT LEVEL FIRST FLOOR

Landing
Bedroom 1: 17'1 x 12'0 (5.21m x 3.66m)
Jack and Jill En-suite
Bedroom 2: 14'1 x 11'0 (4.30m x 3.36m)
Office/Bedroom 3

SPLIT LEVEL SECOND FLOOR

Landing
Bedroom 4: 12'10 x 11'0 (3.91m x 3.36m)
Bedroom 5: 17'11 x 12'1 (5.46m x 3.69m)
Bedroom 6: 8'9 x 6'0 (2.67m x 1.83m)
Bathroom: 10'1 x 8'0 (3.08m x 2.44m)

OUTSIDE

Rear Garden
Off Road Parking



Main features

- Versatile and spacious living accommodation split over three floors
- Off road parking for three cars
- Extended
- Low maintenance rear garden
- Situated within a short walk to town and the train station with high speed access to London St Pancras



Nearest Schools

Primary Schools: Folkestone Christ Church CofE Primary 0.2 miles, Stella Maris Catholic Primary 0.6 miles

Secondary Schools: The Harvey Grammar School 0.8 miles, Highview School 0.8 miles



Transport Information

Train Stations: Folkestone Central 0.2 miles, Folkestone West High Speed Link 0.8 miles, Dover Priory 6.6 miles



Address

Kingsnorth Gardens, Folkestone, Kent, CT20



Directions

For directions to this property please contact us.



Wards
Helping you move forwards

Call Folkestone Branch 01303 256505 ■ wardsofkent.co.uk



■ Legal advice should be taken to verify fixtures/fittings, planning, alterations and/or lease details ■ Appliances & services are untested, dimensions are approximate and floor plans are not to scale
■ Through a Homewise Home For Life Plan people aged 60+ can secure this property for up to 59% less, by purchasing a Lifetime Lease.



12633933/20250405/LS/CC